

FOR LEASE 157 ALEXANDER STREET

FULLY IMPROVED EXCEPTIONAL HISTORIC GASTOWN RESTAURANT OPPORTUNITY



THE LOCATION

Corbel Commercial is proud to present an exceptional restaurant leasing opportunity at 157 Alexander Street. The location is strategically nestled between Gastown to the West, and Railtown to the East, which is home to several of the city's most renowned homegrown businesses such as Aritzia and Herschel Supply Co., and has quickly emerged as a thriving home to several Vancouver's creative entrepreneurs, with other firms such as Haven Apparel, Bloom Furniture Studio and BOCCI located just steps away. Several acclaimed Michelin-rated restaurants including Ask for Luigi, St. Lawrence, L'Abattoir, Pidgin and Di Beppe are all located within walking distance from the historic premise. In addition, with a thriving retail market anchored by notable retailers such as COS by H&M, Roden Gray, Herschel Supply Co., and Inform Interiors, Gastown continues to establish itself as one of the most stylish neighbourhoods in the world.



THE FEATURES



Fully vented and partially fixtured turn-key commercial restaurant opportunity



Beautiful character arched windows overlooking Alexander Street



Exceptional frontage along Alexander Street with north shore mountain views from the primary dining room



A restored classical heritage façade, with portions of exposed brick



Split level restaurant premise interconnected with private internal staircase



Exceptional patio opportunity on the north side of Alexander Street with ample sunlight



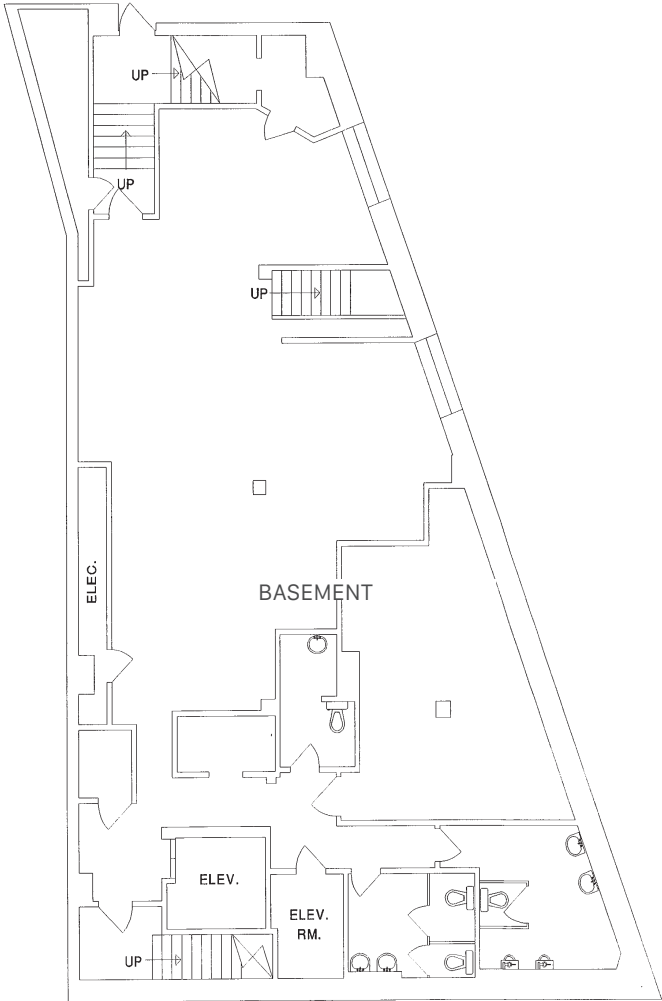
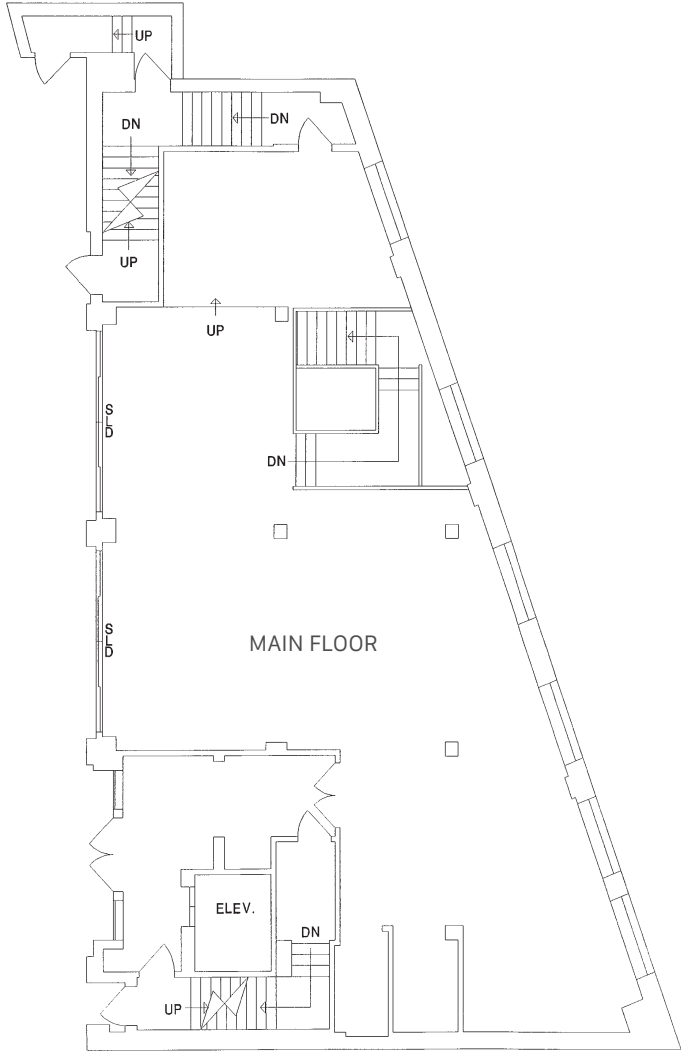
Fully vented commercial kitchen with a stainless steel canopy and fire suppression system in place



Exceptionally strategic location between Gastown and Railtown



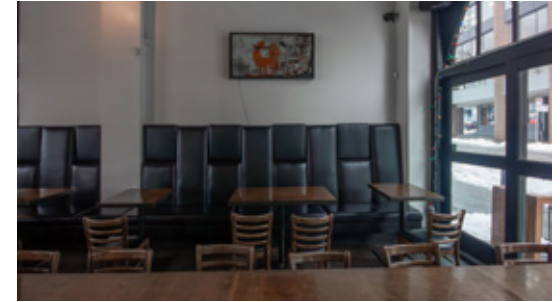
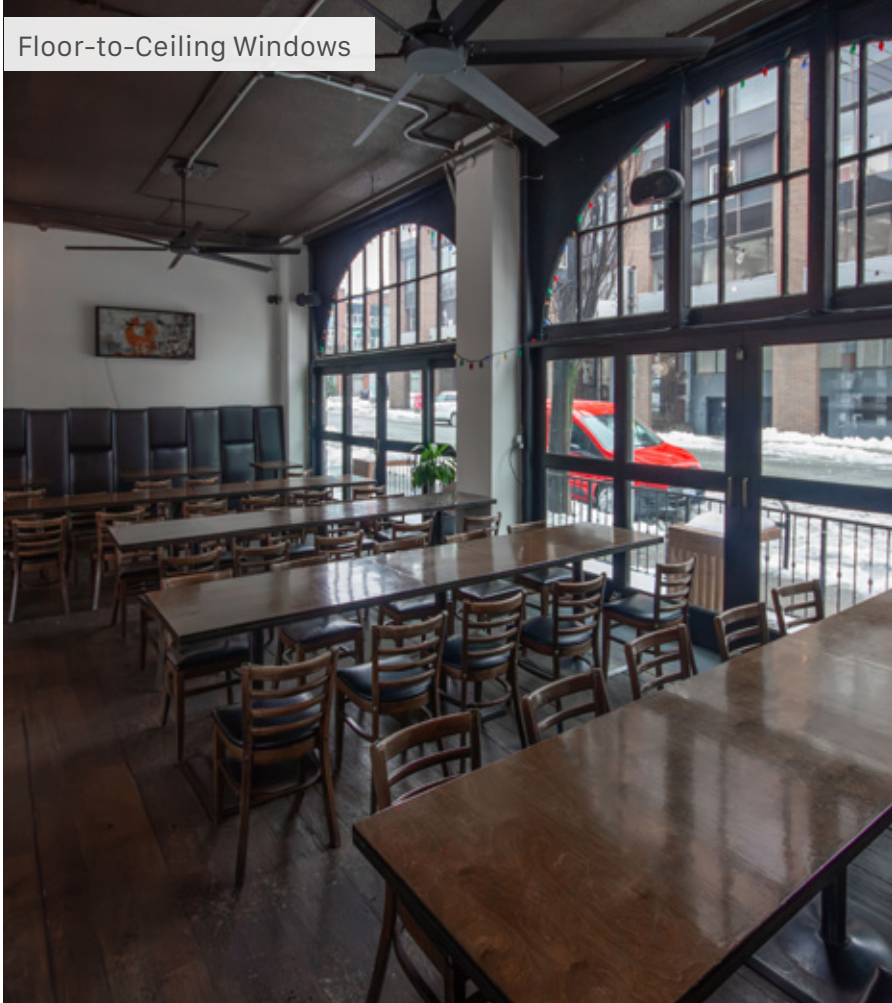
FLOOR PLANS & SALIENT FACTS



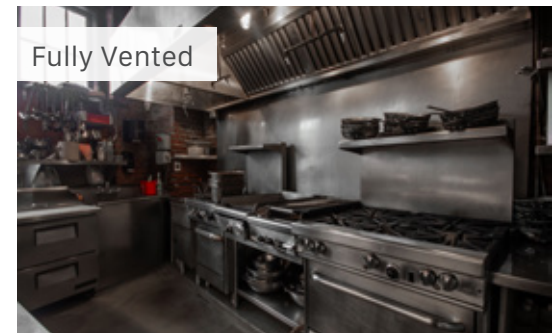
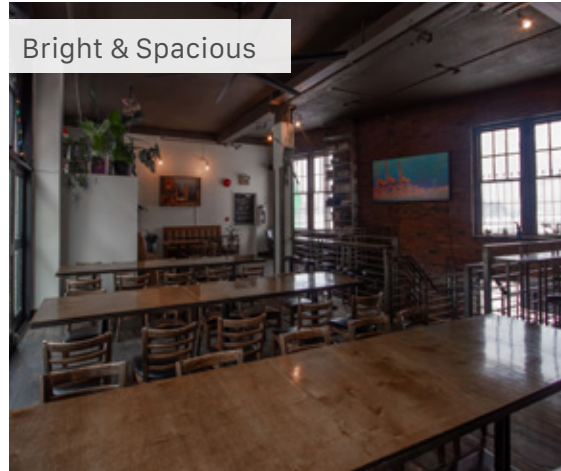
UNIT:	SIZE: ¹	BASIC RENT:	ADDITIONAL RENT:	AVAILABILITY:
Main Level	2,020 SF (Approx.)	Please contact agent	\$15.00 PSFPA (2024 est.)	Please contact agent
Lower Level	2,164 SF (Approx.)	Please contact agent	\$15.00 PSFPA (2024 est.)	

¹All sizes are approximate and subject to verification
*Floor plans may not be 100% accurate and are subject to verification.

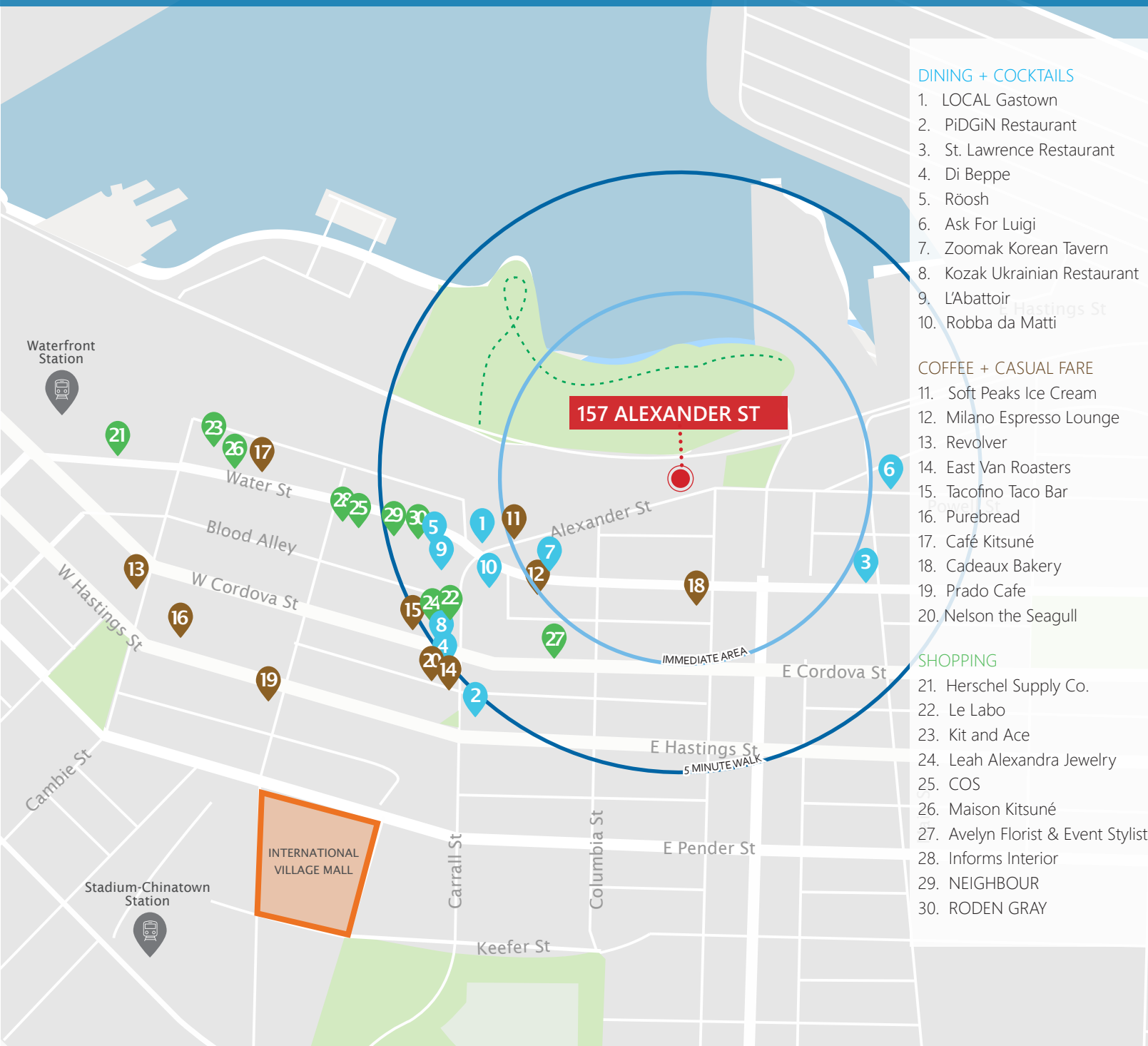
Floor-to-Ceiling Windows



Bright & Spacious



Fully Vented



DINING + COCKTAILS

1. LOCAL Gastown
2. PiDiGiN Restaurant
3. St. Lawrence Restaurant
4. Di Beppe
5. Röosh
6. Ask For Luigi
7. Zoomak Korean Tavern
8. Kozak Ukrainian Restaurant
9. L'Abattoir
10. Robba da Matti

COFFEE + CASUAL FARE

11. Soft Peaks Ice Cream
12. Milano Espresso Lounge
13. Revolver
14. East Van Roasters
15. Tacofino Taco Bar
16. Purebread
17. Café Kitsuné
18. Cadeaux Bakery
19. Prado Cafe
20. Nelson the Seagull

SHOPPING

21. Herschel Supply Co.
22. Le Labo
23. Kit and Ace
24. Leah Alexandra Jewelry
25. COS
26. Maison Kitsuné
27. Avelyn Florist & Event Stylist
28. Informs Interior
29. NEIGHBOUR
30. RODEN GRAY



CONTACT US FOR MORE INFORMATION

ROBERT THAM
604.609.0882 Ext. 223
robert@corbelcommercial.com

MARC SAUL PREC
604.609.0882 Ext. 222
marc@corbelcommercial.com

INFO@CORBELCOMMERCIAL.COM | WWW.CORBELCOMMERCIAL.COM | 632 CITADEL PARADE, VANCOUVER BC, V6B 1X3

E. & O. E.: All information contained herein is from sources we deem reliable, and we have no reason to doubt its accuracy; however, no guarantee or responsibility is assumed thereof, and it shall not form any part of future contracts. Properties are submitted subject to errors and omissions and all information should be carefully verified. All measurements quoted herein are approximate.