

50 POWELL STREET

FOR LEASE | FULLY IMPROVED TURNKEY GASTOWN SALON OPPORTUNITY



50





SALIENT FACTS

SIZE

4,100 SF (Approx.)

BASIC RENT

Please contact agent

ADDITIONAL RENT

\$13.00 (2026 est.)

AVAILABILITY

With Notice

ZONING

HA-2 (Gastown Historic Area)

¹All sizes are approximate and subject to verification.



THE LOCATION

Gastown is an internationally-renowned heritage zone, both a bustling tourist destination and a trendy gathering place for locals. Characterized by cobblestone streets, brick and timber heritage buildings and abundant historical charm, the high-traffic neighbourhood houses many of the city's hottest restaurants and retail stores. Gastown has also become home to numerous design studios, technological and software companies, and leading architectural firms. Popular venues in the area include L'Abattoir, Local Restaurant, Café Kitsuné, and Pourhouse Restaurant. The location is served by several transit routes and is in close proximity to the SeaBus terminal, Waterfront SkyTrain Station, the West Coast Express and several public parkades.

FEATURES



High exposure retail opportunity with exceptional pedestrian and vehicle exposure in vibrant Gastown.



Stunning character unit with polished concrete flooring, exposed brick feature walls and wooden beams.



Large retail display windows with prominent signage potential.



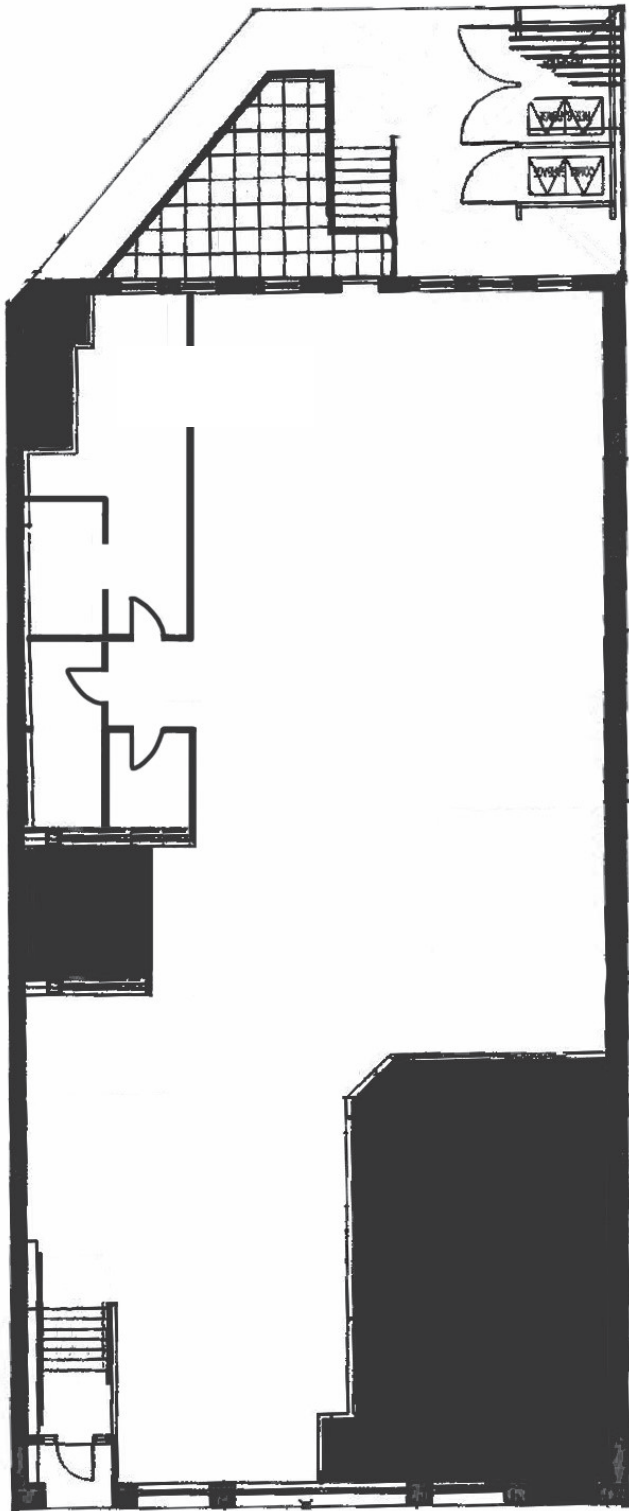
Bright and airy unit with excellent ceiling heights and track lighting throughout.



Private washroom, kitchenette, plus dedicated in-suite storage.



Gated rear patio and convenient loading access from the lane.



DINING + COCKTAILS

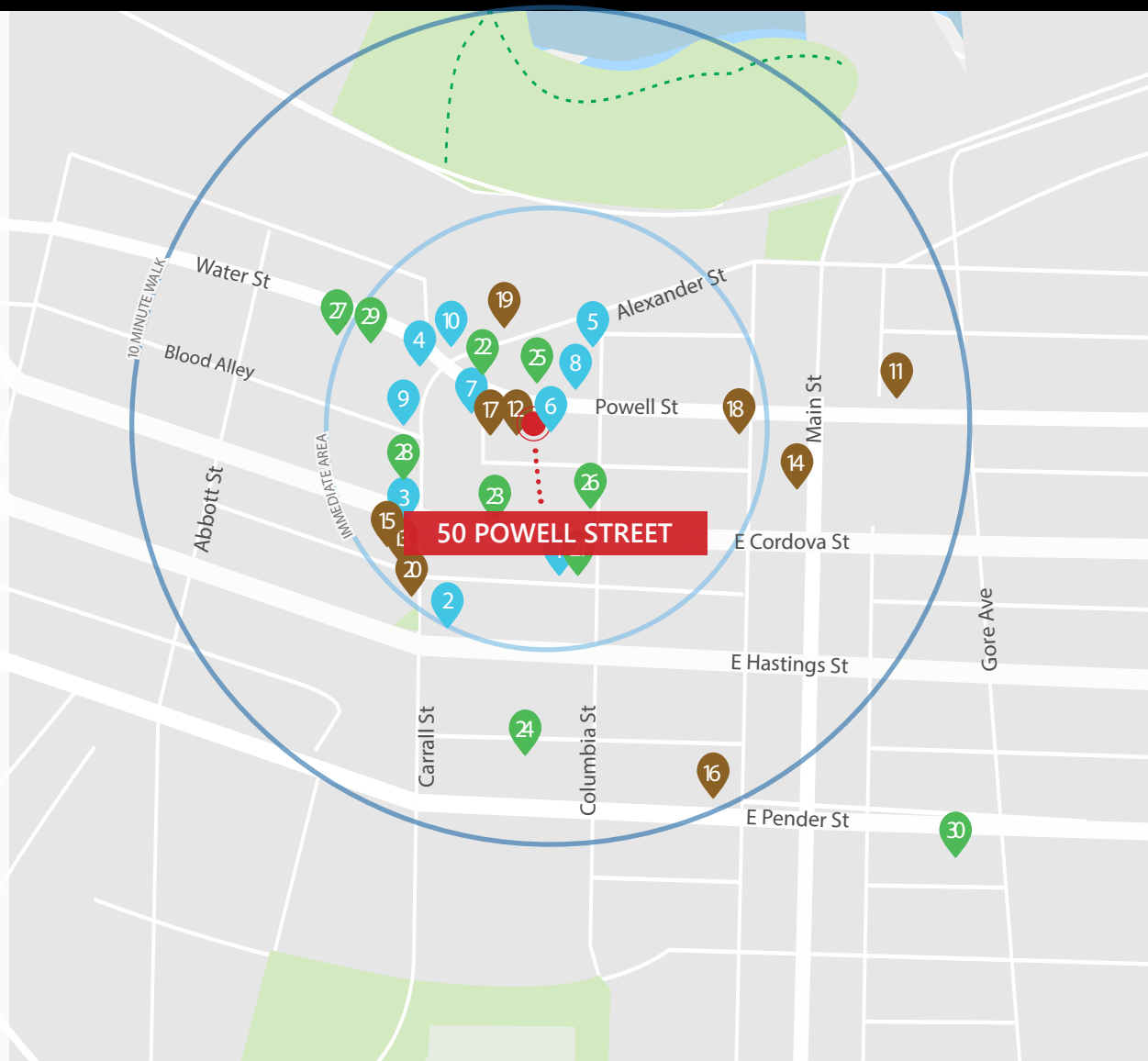
1. Tekkaba Omakase
2. PiDiGiN Restaurant
3. Di Beppe
4. Six Acres
5. Brioche Ristorante
6. TAKENAKA Uni Bar
7. Robba da Matti
8. The Birds & The Beets
9. L'Abattoir
10. LOCAL Gastown

COFFEE + CASUAL FARE

11. Bean Around the World Coffees
12. Milano Espresso Lounge
13. East Van Roasters
14. Saan Saan Cafe
15. Di Beppe Caffè
16. DD MAU
17. Skewers Souvlaki Pita Bar
18. Cadeaux Bakery
19. Soft Peaks Ice Cream
20. Nelson the Seagull

SHOPPING + ENTERTAINMENT

21. The Shop Vancouver
22. NEIGHBOUR/Woman
23. Growing Pains Tattoos
24. Chinese Canadian Museum
25. Stüssy
26. Rituals of Love Bridal
27. Inform Interiors
28. Le Labo
29. Roden Gray
30. Diaz Combat Sports



98

Walker's Paradise

Daily errands do not require a car



100

Rider's Paradise

World-class public transportation

Data sourced from walkscore.com



East Van Roasters



Brioche Ristorante



Tekkaba Omakase



Stüssy

Contact Us

ROBERT THAM

604.609.0882 Ext. 223

robert@corbelcommercial.com

DENVER MENDOZA

604.609.0882 Ext. 221

denver@corbelcommercial.com

MARC SAUL PREC

604.609.0882 Ext. 222

marc@corbelcommercial.com

NATHAN ARMOUR PREC

604.609.0882 Ext. 226

marc@corbelcommercial.com

INFO@CORBELCOMMERCIAL.COM | WWW.CORBELCOMMERCIAL.COM | 632 CITADEL PARADE, VANCOUVER BC, V6B 1X3

Aerial Photography by Tom Kwok, Onikon | Walkscore Source: www.walkscore.com

E. & O. E.: All information contained herein is from sources we deem reliable, and we have no reason to doubt its accuracy; however, no guarantee or responsibility is assumed thereof, and it shall not form any part of future contracts. Properties are submitted subject to errors and omissions and all information should be carefully verified. All measurements quoted herein are approximate.