

110 CAMBIE STREET

FOR LEASE | EXCLUSIVE FULL-FLOOR PENTHOUSE OFFICE WITH PRIVATE ROOFTOP TERRACE



THE LOCATION

Gastown is Vancouver's most iconic cultural neighbourhood defined by its cobblestone streets, heritage brick buildings, curated retail, and world-class food and beverage scene. It is a thriving hub for architecture firms, design studios, digital agencies, tech startups, film and content producers, and boutique professional services firms.

Surrounded by landmark eateries and cafés including Lee's Donuts, Maison Kitsuné, Steamworks, and Water Street Café. The area offers one of the most vibrant amenity bases in the city. Waterfront Station, the SeaBus, and major transit lines are all within a two-minute walk, providing seamless connectivity for teams and clients.





THE FEATURES



Private rooftop patio. An exceptionally unique indoor-outdoor work environment-ideal for meetings, events or breakout space



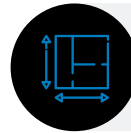
Direct elevator access to a private full-floor penthouse



Panoramic North Shore, harbour, and urban city skyline views



Exceptionally bright interiors with large perimeter windows and abundant natural light



Flexible layout with open workspace, meeting rooms & private offices



In-suite convenience with kitchenette and two washrooms



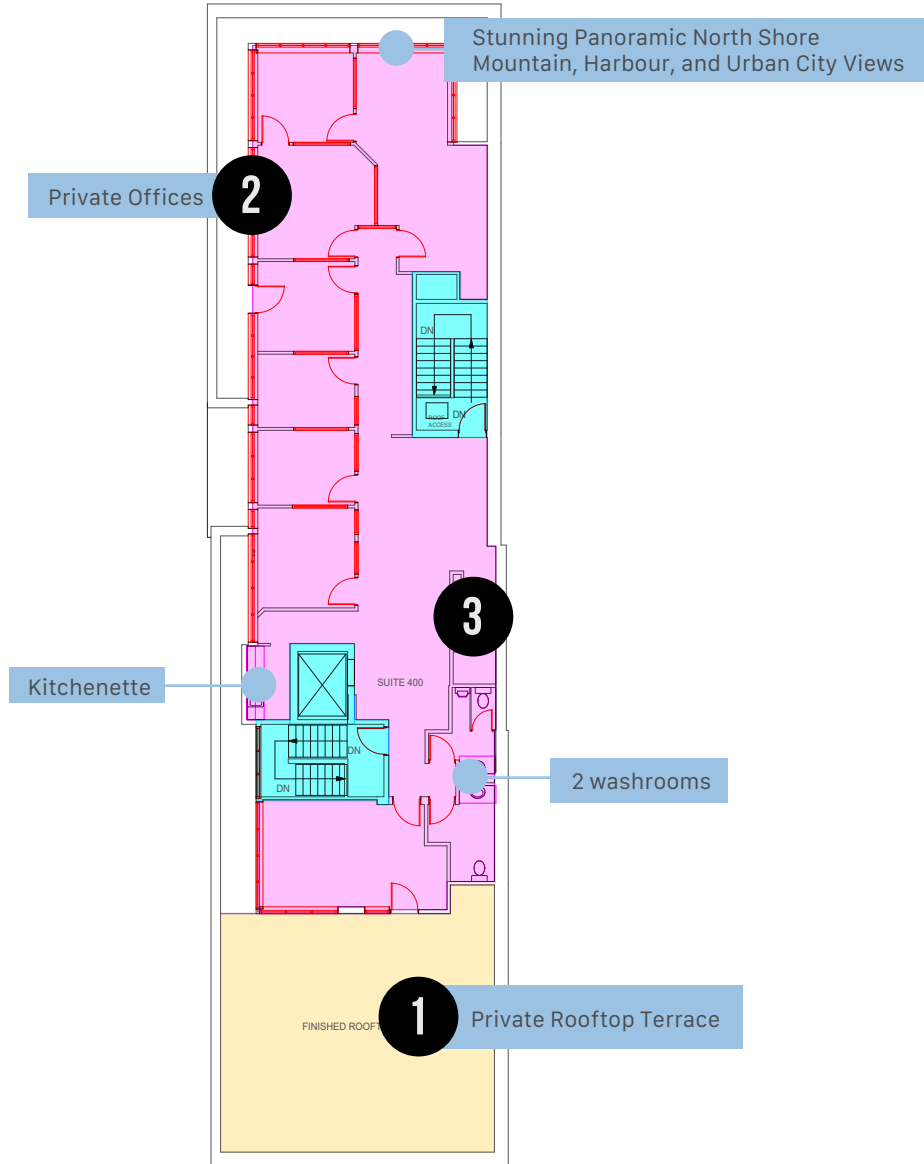
Heritage character setting directly across from the Gastown Steam Clock



Amenity-rich location steps to top dining, cafés & boutiques



Exceptional connectivity near Waterfront Station (SkyTrain, SeaBus, WCE)

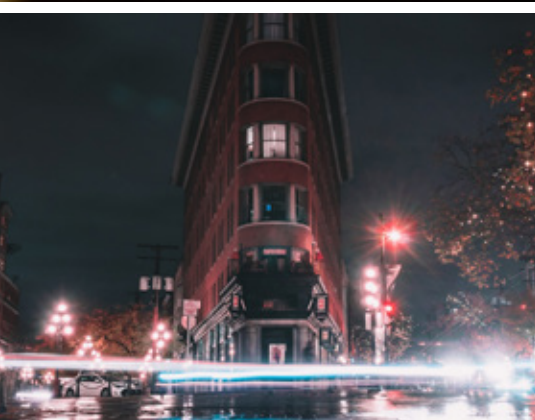


| Size (Approx.): ¹ | Basic Rent: | Additional Rent: | Availability: |
|--|----------------------|---------------------|---------------|
| Main: 2,601.90 SF Rooftop: 999.50 SF Total: 3,601.40 SF | Please contact agent | \$15.00 (2025 est.) | Immediately |

¹All sizes are approximate and subject to verification
²Floor plan may not be 100% accurate and is subject to verification.



Timbertrain Coffee Roasters

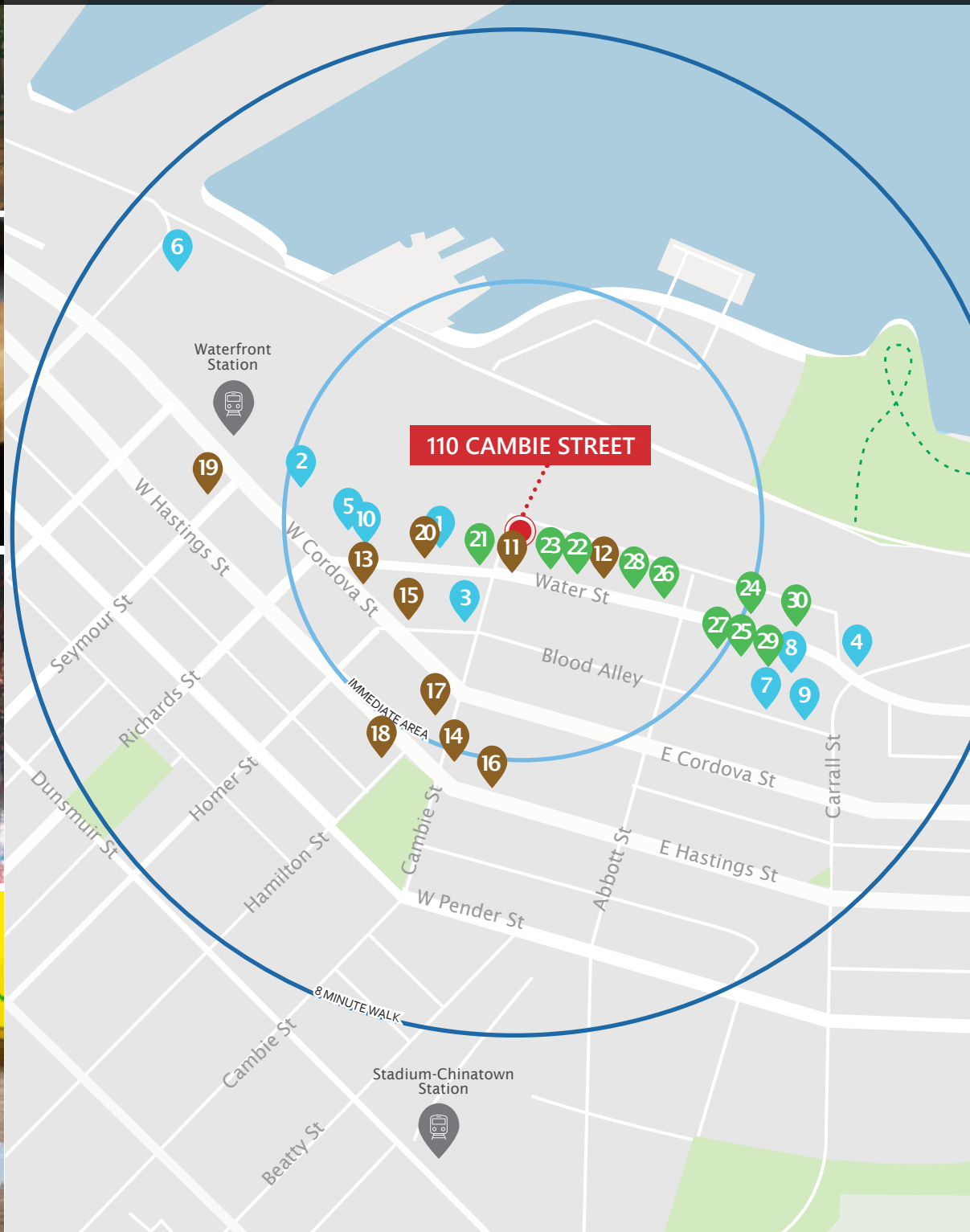


Lee's Donut

97 Walker's Paradise
Daily errands do not require a car

100 Rider's Paradise
World-class public transportation

Source: walkscore.com



around the neighbourhood.

DINING + COCKTAILS

1. Al Porto Ristorante
2. Rogue
3. Water St. Café
4. LOCAL Gastown
5. Steamworks
6. Miku
7. Meet in Gastown
8. The Greek Gastown
9. L'Abattoir
10. Guu with Otokomae

COFFEE + CASUAL FARE

11. Lee's Donuts
12. Café Kitsuné
13. Monaco Cafe
14. Meat & Bread
15. Timbertrain Coffee
16. Purebread
17. Revolver
18. Nemesis Coffee
19. Deville Coffee
20. Sonder Cafe

SHOPPING

21. The Latest Scoop
22. Maison Kitsuné
23. Kit and Ace
24. John Fluevog Shoes
25. COS
26. Australian Boot Company
27. Inform Interiors
28. Oak + Fort
29. Roden Gray
30. DRMERS CLUB

Contact Us

ROBERT THAM
604.609.0882 Ext. 223
robert@corbelcommercial.com

MARC SAUL PREC
604.609.0882 Ext. 222
marc@corbelcommercial.com

DENVER MENDOZA
604.609.0882 Ext. 221
denver@corbelcommercial.com

NATHAN ARMOUR PREC
604.609.0882 Ext. 226
nathan@corbelcommercial.com