

1026 DAVIE STREET

FOR LEASE | RARE SMALL FORMAT WEST END OFFICE OPPORTUNITY





SALIENT FACTS

UNIT

320

SIZE¹

800 SF (Approx.)

GROSS RENT²

\$2,449.00/month + GST

AVAILABILITY

Immediately

ZONING

C-5 (Commercial District)

¹All sizes are approximate and subject to verification.

²Gross rent currently equates to this amount plus GST. Lease to be fully triple net. Estimated additional rent is \$13.00 (2026 est.).

THE LOCATION

1026 Davie Street is conveniently located between Burrard and Thurlow Streets on the edge of the vibrant West End district, steps to the Seawall and Sunset Beach Park. The West End is a lively community featuring an exceptional mix of housing, retail shops, restaurants and cafes, plus access to incomparable recreation and amenities. The location is well-served by public transportation, with numerous bus routes and the nearby Yaletown-Roundhouse SkyTrain yielding a transit score of 99. 1026 Davie Street is a perfect location for a variety of businesses and services to call home.

FEATURES



Charming office unit in a well-maintained building located in the bustling West End of downtown Vancouver



Excellent ceiling height



Large operable windows allowing ample natural light

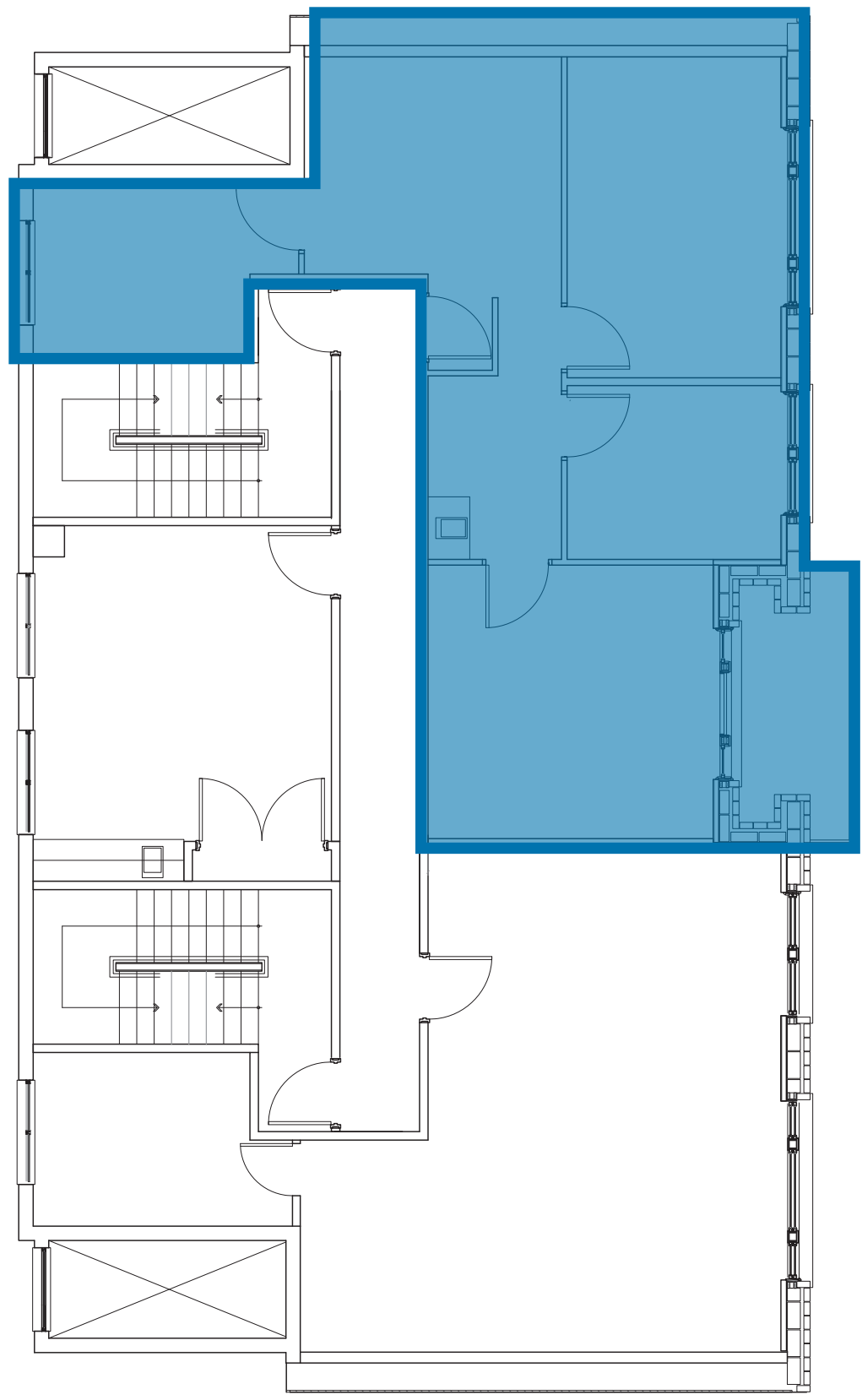


Ample street parking in the immediate area



Excellent transit access and many popular restaurants and amenities in the immediate vicinity





*Floor plan may not be 100% accurate and is subject to verification.

DINING + COCKTAILS

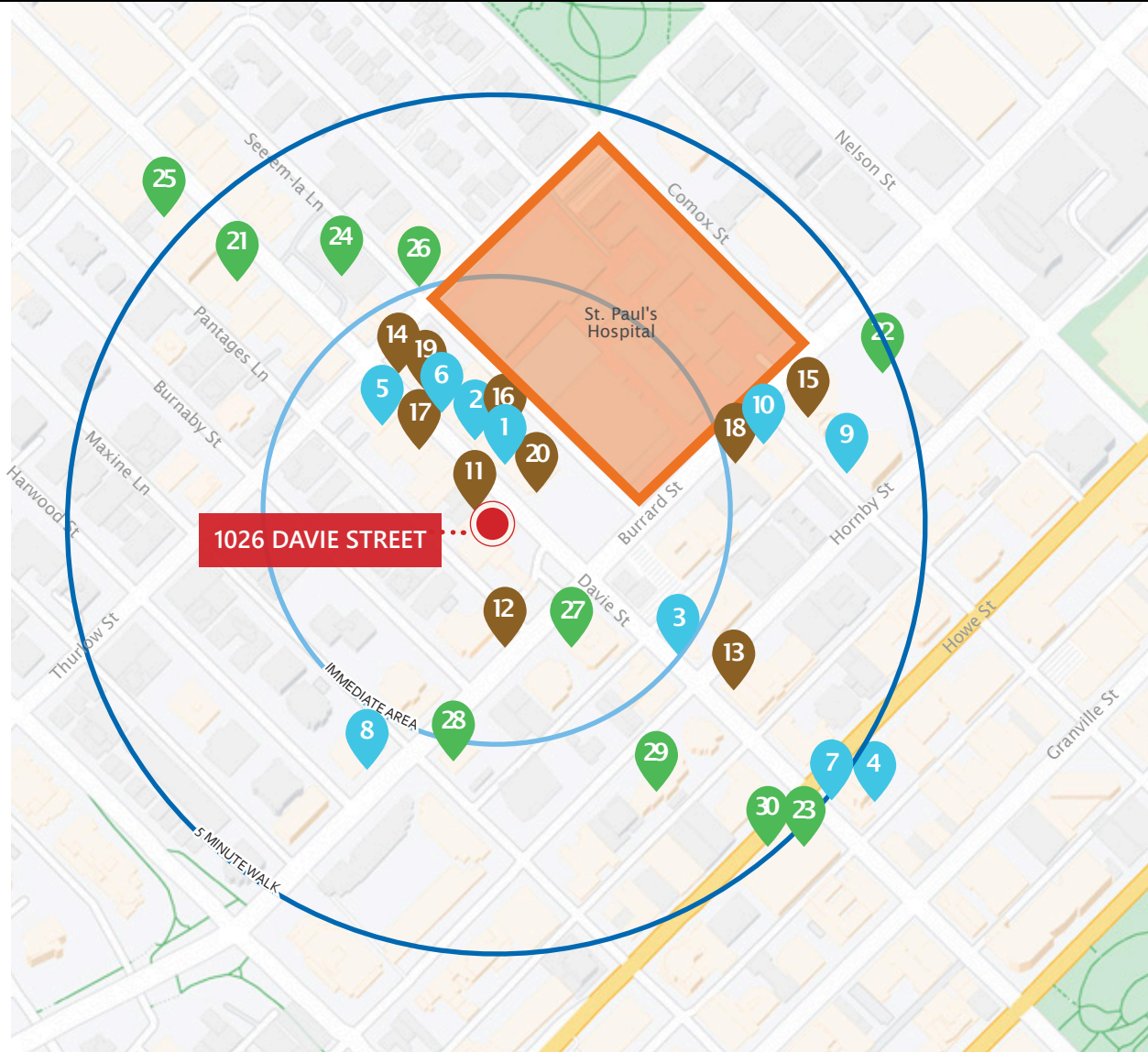
- 1. Banana Leaf
- 2. Bonta Italian Ristorante
- 3. Sushi Mugen
- 4. Rorimomo Restaurant
- 5. Gringo
- 6. Fatburger
- 7. Honeybrew Strudel Bar
- 8. Maxine's Cafe & Bar
- 9. Fat Mao Noodles
- 10. Burgoo

BARS + CASUAL FARE

- 11. Vera's Burger Shack
- 12. Caffe Mira
- 13. Breka Bakery & Café
- 14. Starbucks
- 15. Elysian Coffee
- 16. Chipotle
- 17. Poke Bar
- 18. Elysian Coffee
- 19. AMOKA Coffee and Bites
- 20. The Fountainhead Pub

SHOPPING + AMENITIES

- 21. Orangetheory Fitness
- 22. Sheraton Vancouver Wall Centre
- 23. Body Energy Club
- 24. Shoppers Drug Mart
- 25. Kin's Farm Market
- 26. Bones Pet Stores
- 27. TD Canada Trust Branch
- 28. Jim Pattison Toyota
- 29. Residence Inn by Marriott
- 30. Fitness World



96 Walker's Paradise Daily errands do not require a car

99 Rider's Paradise World-class public transportation

Data sourced from walkscore.com



Contact Us

ROBERT THAM

604.609.0882 Ext. 223
robert@corbelcommercial.com

DENVER MENDOZA

604.609.0882 Ext. 221
denver@corbelcommercial.com

MARC SAUL PREC

604.609.0882 Ext. 222
marc@corbelcommercial.com

NATHAN ARMOUR PREC

604.609.0882 Ext. 226
marc@corbelcommercial.com

INFO@CORBELCOMMERCIAL.COM | WWW.CORBELCOMMERCIAL.COM | 632 CITADEL PARADE, VANCOUVER BC, V6B 1X3

E. & O. E.: All information contained herein is from sources we deem reliable, and we have no reason to doubt its accuracy; however, no guarantee or responsibility is assumed thereof, and it shall not form any part of future contracts. Properties are submitted subject to errors and omissions and all information should be carefully verified. All measurements quoted herein are approximate.