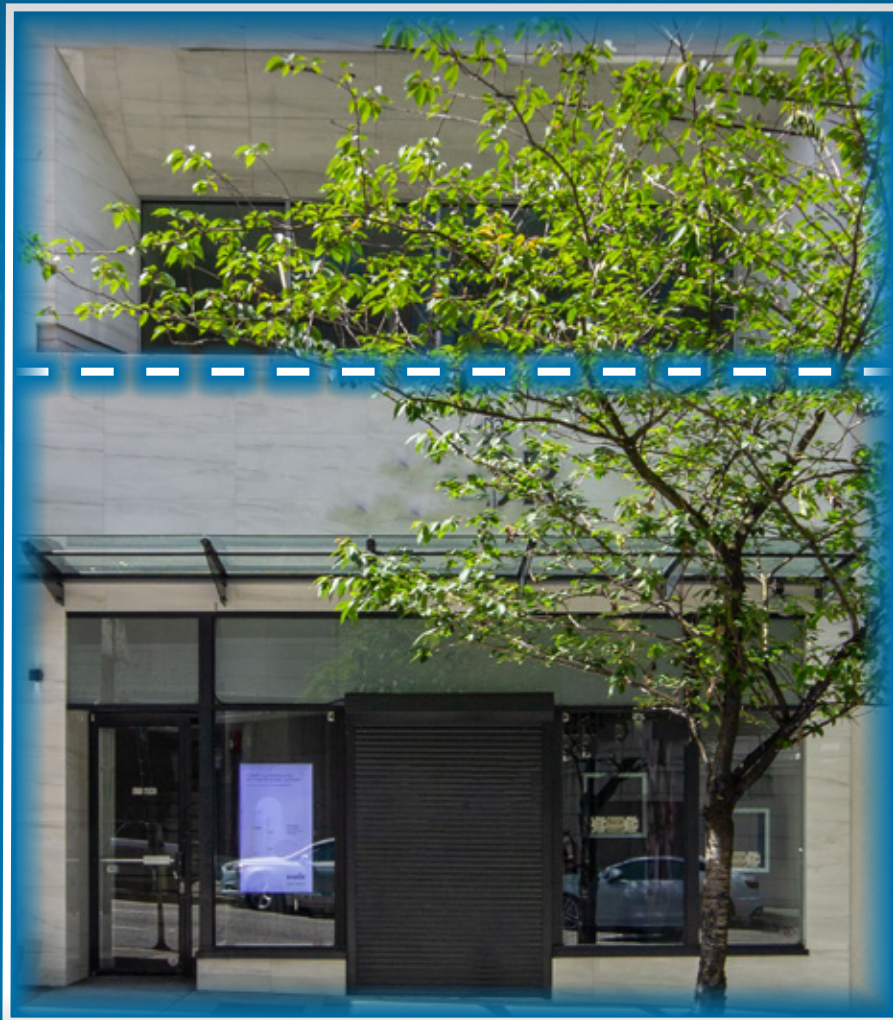


569

HOWE STREET

For Lease | High Profile Downtown Vancouver Retail Opportunities





THE LOCATION

569 Howe Street is located in the heart of the Central Business District of Downtown Vancouver, ideally located on Howe Street between Dunsmuir and W Pender Streets. The area is exceptionally densely populated with many cafes, restaurants, art galleries, and shops. The property is strategically located by CF Pacific Centre, which is home to the flagship locations of The Hudson's Bay Company, Starbucks Reserve, Apple, H&M, and among many others. Notable neighbours in the immediate area include SFU's Segal Graduate School, the EXchange Hotel Vancouver, and several office towers including the historic Rogers and Birks Buildings and Sinclair Centre Shopping Mall. Additionally, this opportunity is located steps from Granville Skytrain Station and Waterfront Skytrain station along with several other transit routes including the SeaBus terminal and The West Coast Express.



THE FEATURES



Prime retail opportunities strategically located in the heart of Downtown Vancouver's Central Business District



Unit 569 is a prime spa retail opportunity with five private treatment rooms, each thoughtfully designed with built-in handwashing sinks.



Large windows providing abundant natural light and prominent signage opportunities



Fully distributed HVAC



Private washrooms



In close proximity to many popular restaurants, cafés, boutiques, and hotels, including Starbucks Reserve and CF Pacific Centre



Central location with excellent transit access, steps from Granville Skytrain Station and Waterfront Skytrain station



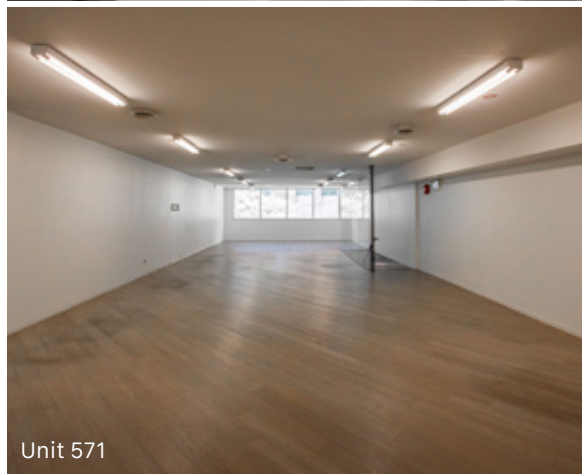
Unit 569



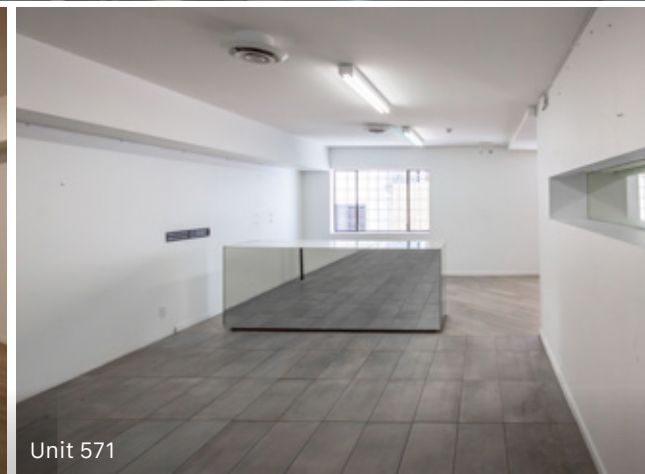
Unit 569



Unit 569

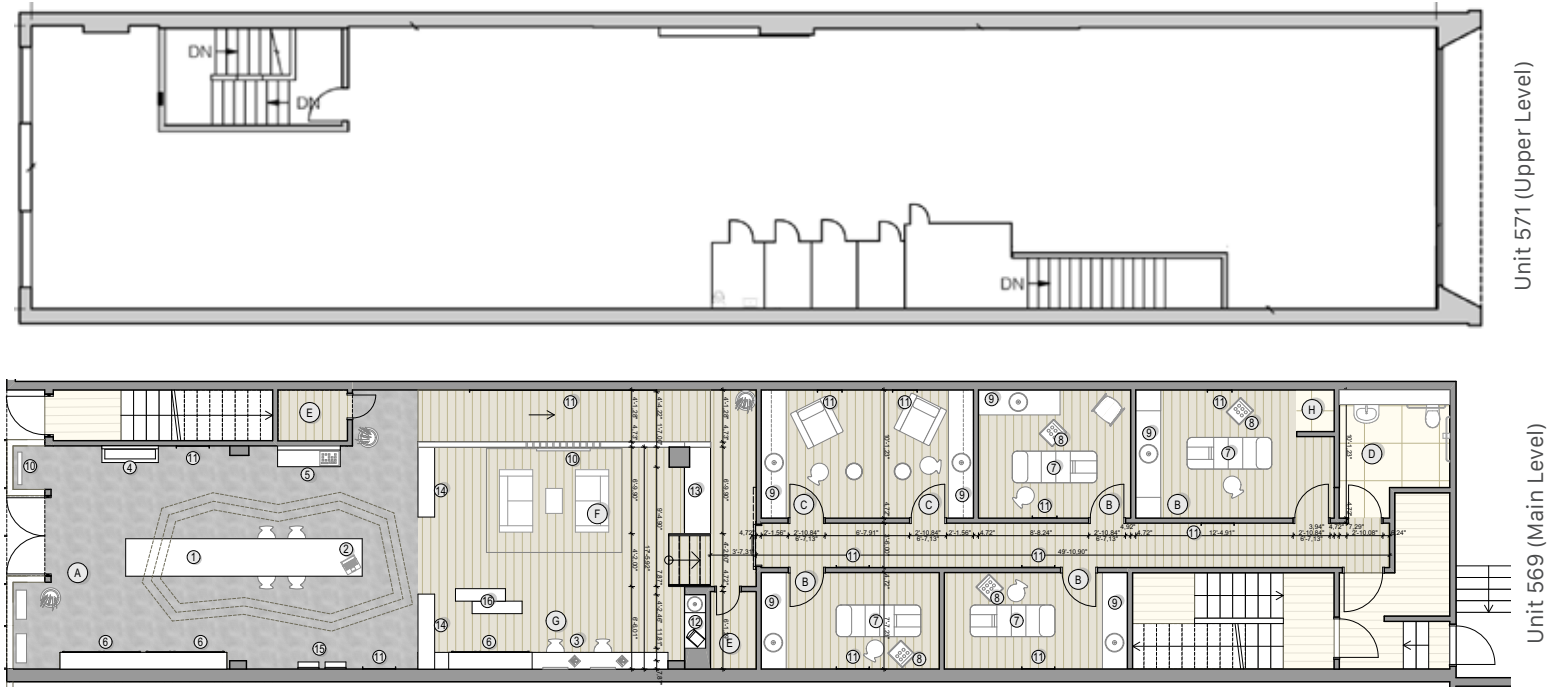
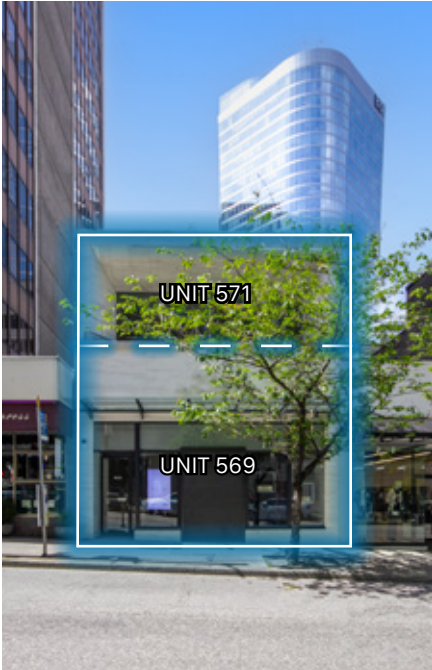


Unit 571



Unit 571

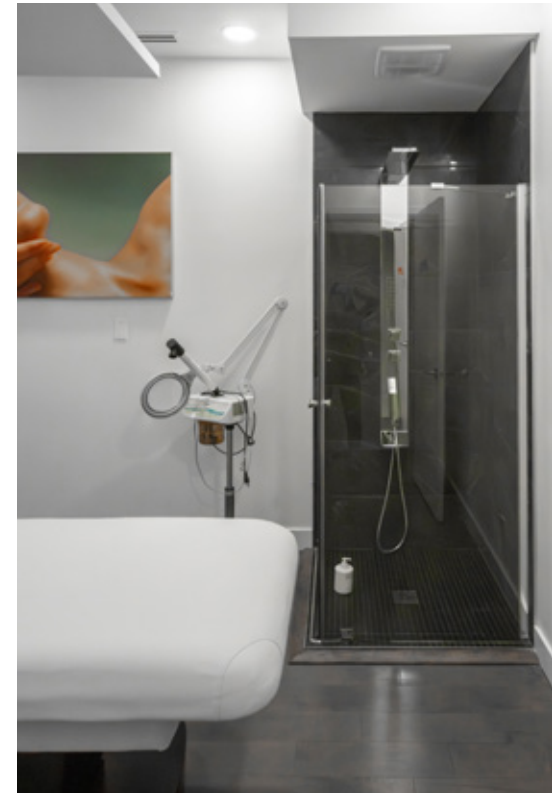
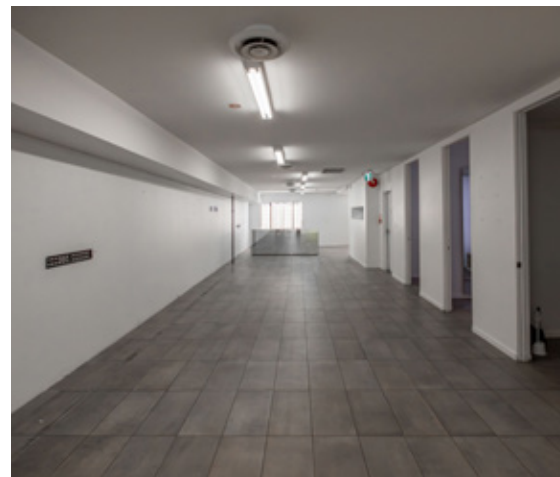
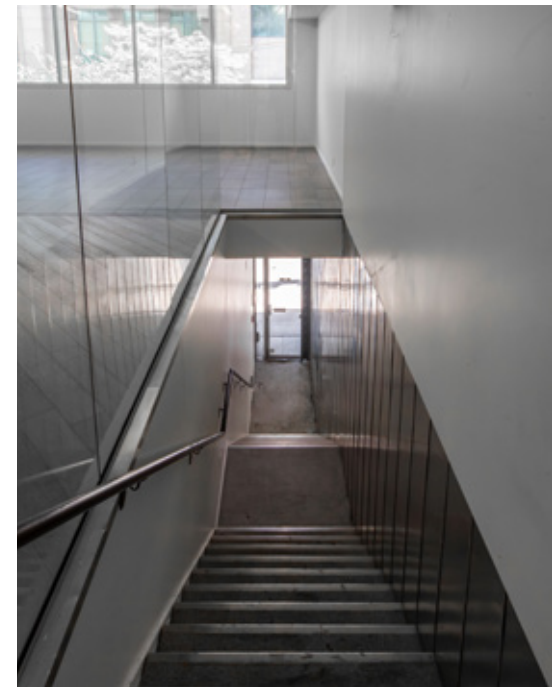
FLOOR PLAN & SALIENT FACTS

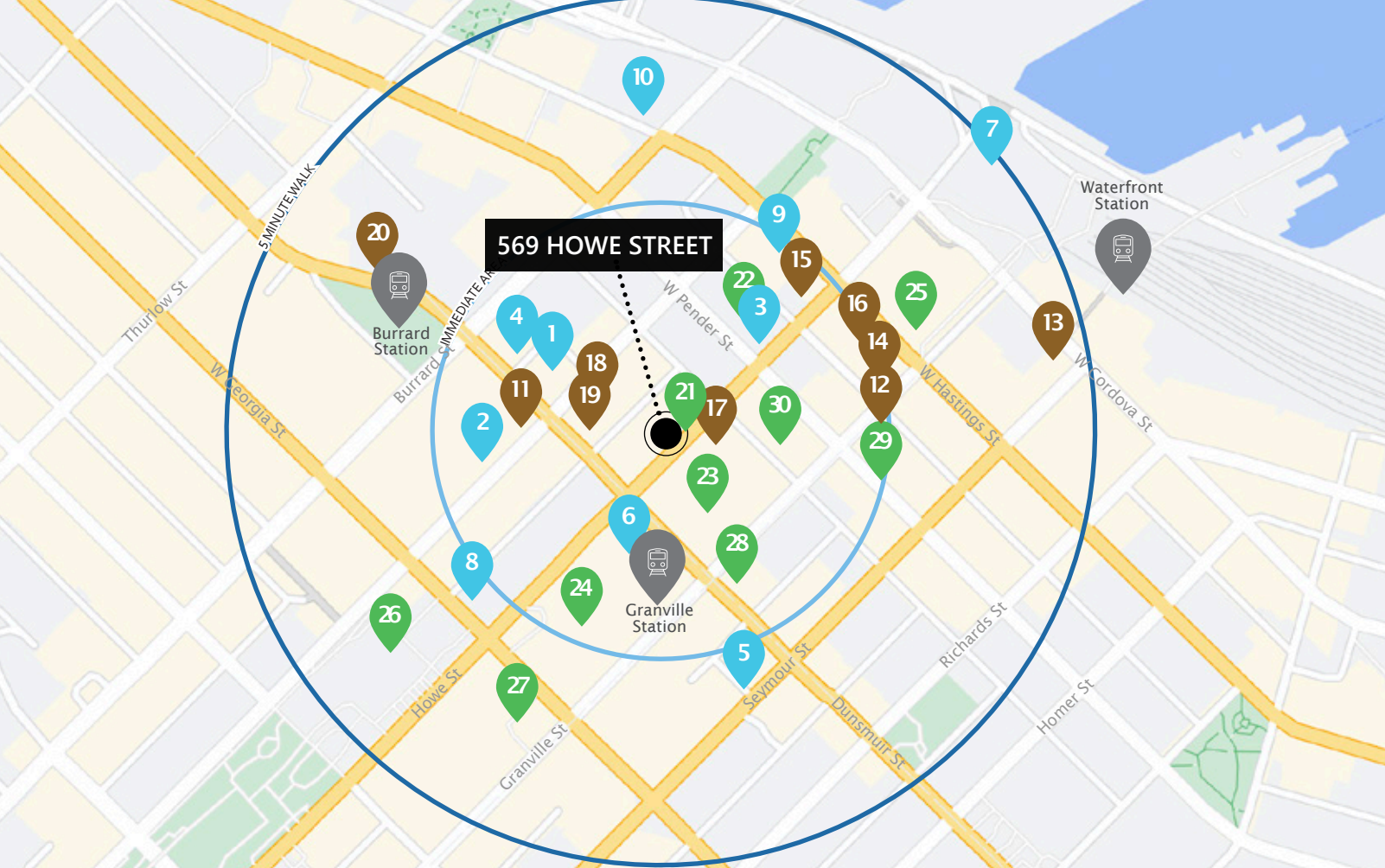


UNIT:	SIZE (Approx.): ¹	BASIC RENT:	ADDITIONAL RENT:	ZONING:	AVAILABILITY
569	2,900 SF	Please contact agent	\$15.48 (2025 est.)	DD (Comprehensive Development)	Immediately
571	2,900 SF	\$25.00 PSFPA	\$15.48 (2025 est.)		Immediately
Full Building	5,800 SF	Please contact agent	\$15.48 (2025 est.)		Immediately

¹All sizes are approximate and subject to verification.
^{*}Floor plan may not be 100% accurate and is subject to verification.

In the pulse of
Downtown Vancouver.





GETTING AROUND

WALKER'S PARADISE



Daily errands do not require a car

RIDER'S PARADISE



World-class public transportation



RESTAURANTS

1. Alouette Bistro
2. Hy's Steakhouse
3. Hydra Estiatorio
4. Cactus Club
5. Gotham Steakhouse
6. The Keg
7. Miku
8. Hawksworth Restaurant
9. Palate Kitchen
10. Nightingale

CAFÉS & CASUAL FARE

11. JJ Bean Coffee
12. Trees Organic Coffee
13. Deville Coffee
14. Raitown Café
15. Artigiano
16. Breka Bakery & Café
17. Holts Café Vancouver
18. La Taqueria Pinche Taco Shop
19. Starbucks
20. FUNK. Coffee Bar

SHOPPING & AMENITIES

21. Feuille Luxury
22. EXchange Hotel Vancouver
23. Holt Renfrew
24. CF Pacific Centre
25. Sinclair Centre
26. Vancouver Art Gallery
27. London Drugs
28. Shoppers Drug Mart
29. Rove Concepts
30. CF Pacific Centre Offices

ROBERT THAM
604.609.0882 Ext. 223
robert@corbelcommercial.com

MARC SAUL*
604.609.0882 Ext. 222
marc@corbelcommercial.com

*Personal Real Estate Corporation.

INFO@CORBELCOMMERCIAL.COM | WWW.CORBELCOMMERCIAL.COM | 632 CITADEL PARADE, VANCOUVER BC, V6B 1X3

E. & O. E.: All information contained herein is from sources we deem reliable, and we have no reason to doubt its accuracy; however, no guarantee or responsibility is assumed thereof, and it shall not form any part of future contracts. Properties are submitted subject to errors and omissions and all information should be carefully verified. All measurements quoted herein are approximate.

corbel
COMMERCIAL REAL ESTATE SERVICES