

877 E HASTINGS STREET

FOR LEASE | PRIME STRATHCONA OFFICE/SHOWROOM OPPORTUNITIES



THE LOCATION

The subject property is located on the north side of East Hastings Street in the heart of trendy Strathcona, just minutes from downtown Vancouver and adjacent to Railtown, Chinatown and Gastown. The area has recently seen rapid growth in commercial and residential development and features an excellent mix of amenities nearby. The property features notable neighbours including Strathcona Beer Company, Les Amis Du Fromage, The Garden Strathcona Café, Hype Chocolate Co., Wilet, Article, and Prototype Coffee. Just one block to the east, the Strathcona Village development by Wall Financial has added 350 new homes and over 60,000 SF of commercial space to the immediate area. This location is strategically poised for exceptional continued growth and massive transition with a huge influx of new businesses and residents occurring now.

THE FEATURES



Newly renovated building located in trendy Strathcona



Natural light from windows on both sides of the premises including harbour and mountain views



Passenger elevator access



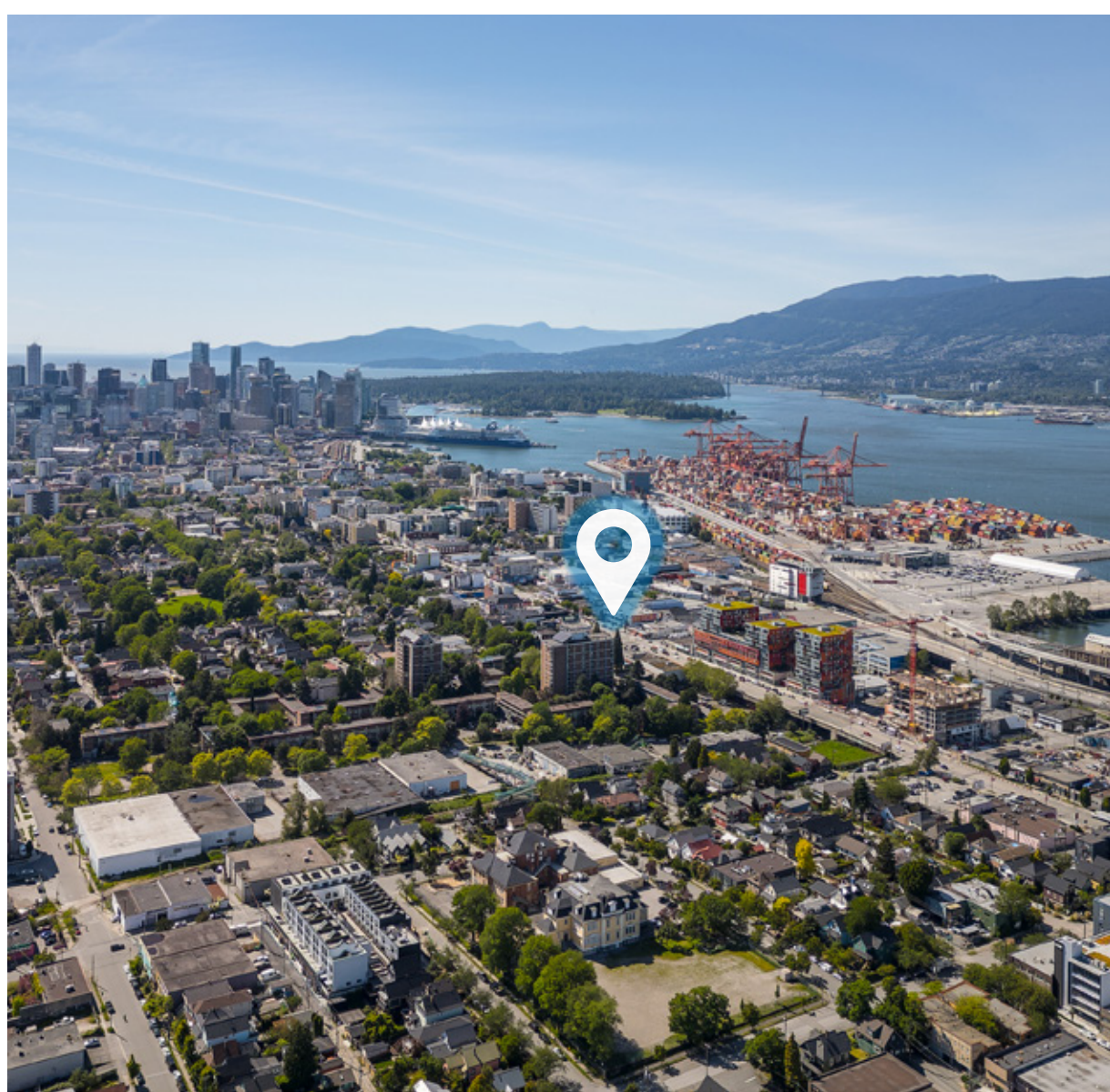
Dedicated in-suite washrooms and private kitchenette available



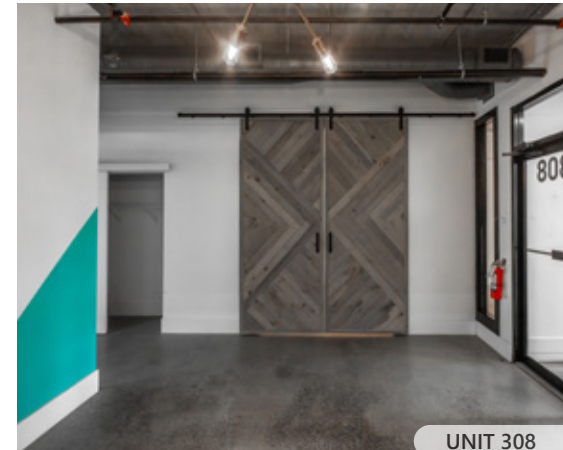
One secured underground parking stall available with additional stalls potentially available at market rates



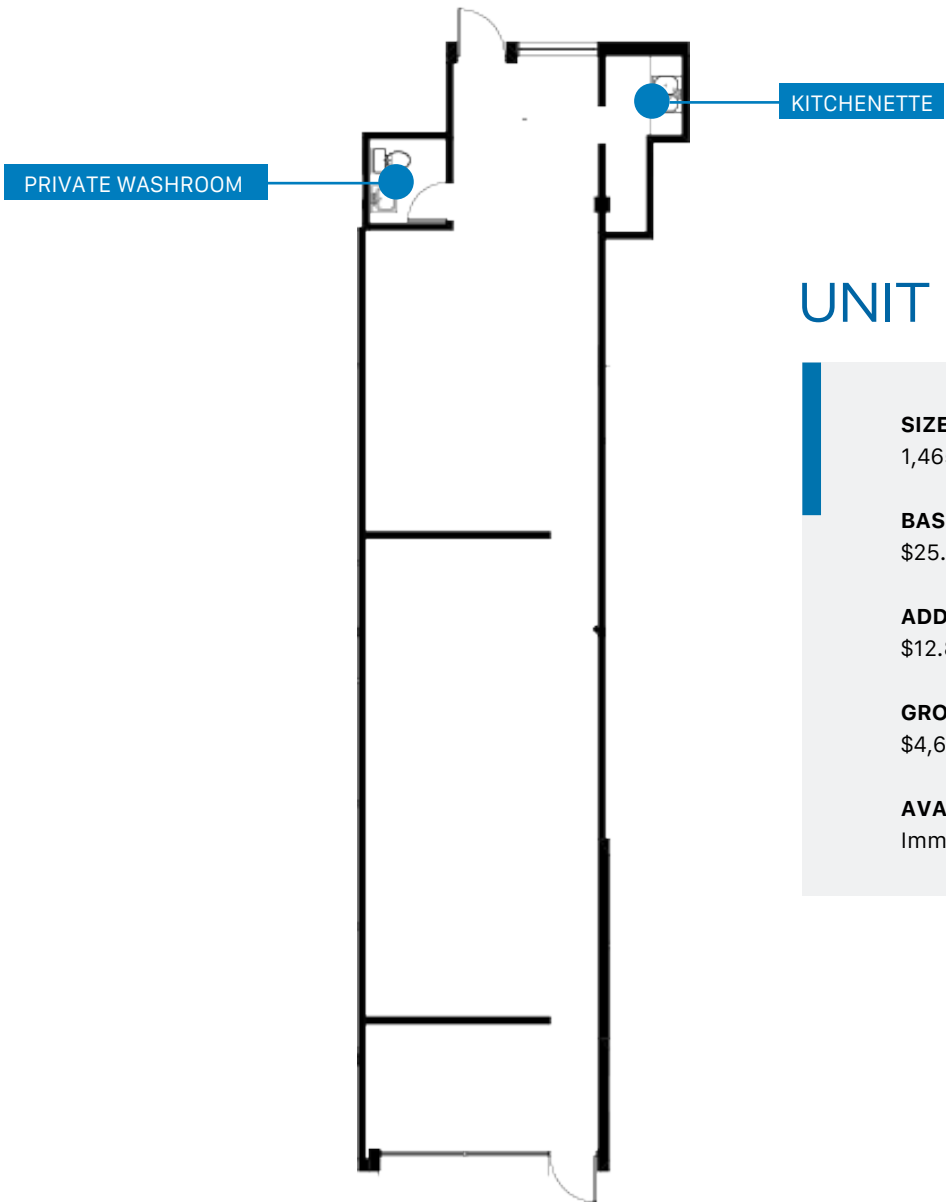
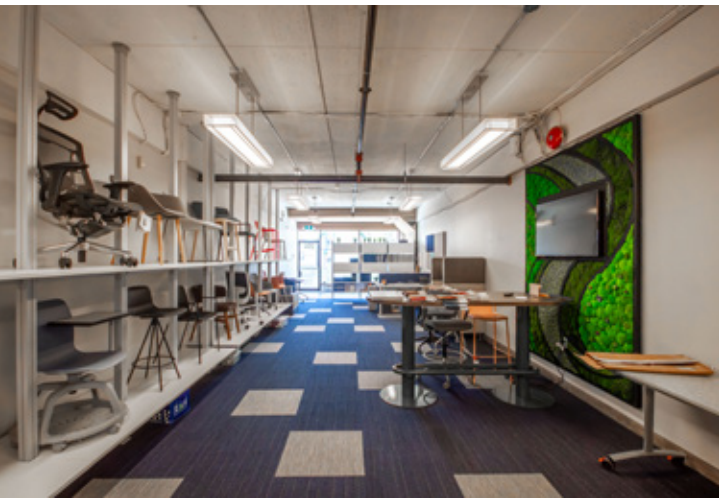
Strategically located with excellent transit accessibility and ongoing neighbourhood growth from multiple developments in the immediate area



UNIT 308



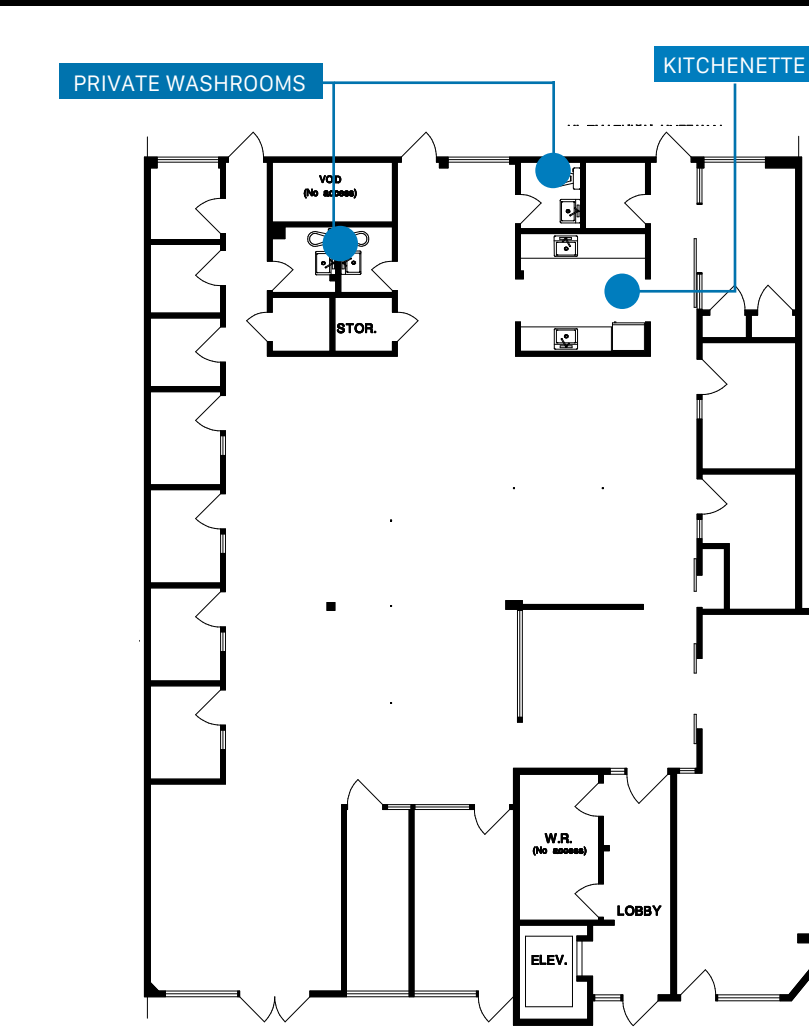
UNIT 308



UNIT 204

- SIZE**
1,465 SF (Approx.)
- BASIC RENT**
\$25.00 PSFPA
- ADDITIONAL RENT**
\$12.87 (2025 est.)
- GROSS RENT**
\$4,623.30/month + GST
- AVAILABILITY**
Immediately

¹All sizes are approximate and subject to verification.
²Gross rent currently equates to this amount plus GST. Lease to be fully triple net.
*Floor plans may not be 100% accurate and are subject to verification.



UNIT 308

SIZE

1,350 SF - 4,253 SF (Approx.)

BASIC RENT

\$25.00 PSFPA

ADDITIONAL RENT

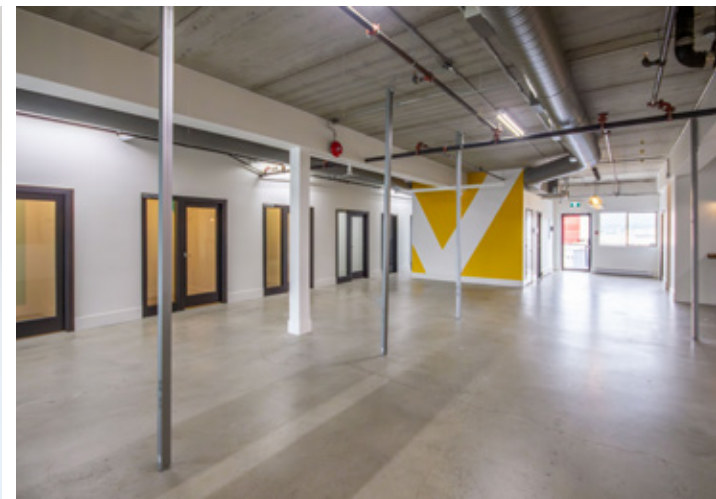
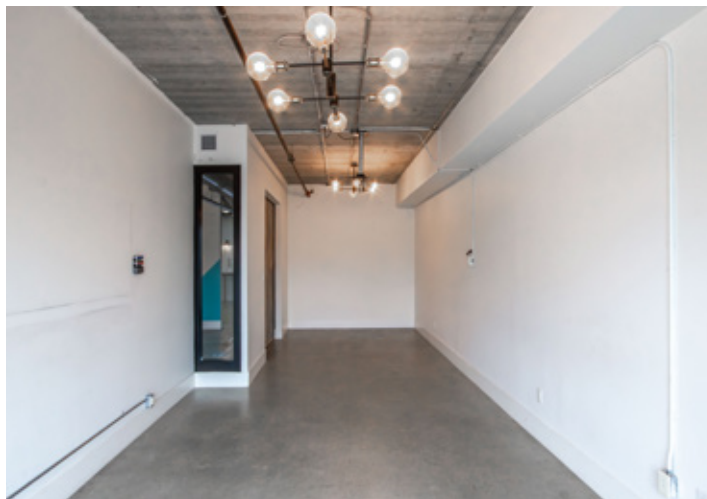
\$12.87 (2025 est.)

AVAILABILITY

Immediately

- Turnkey space, ready for immediate use
- Mix of open and enclosed office spaces
- Premises can be demised into three individual units of approximately 1,350 SF. Please contact agent for more details

*All sizes are approximate and subject to verification.
*Floor plans may not be 100% accurate and are subject to verification.





86

Walker's Paradise

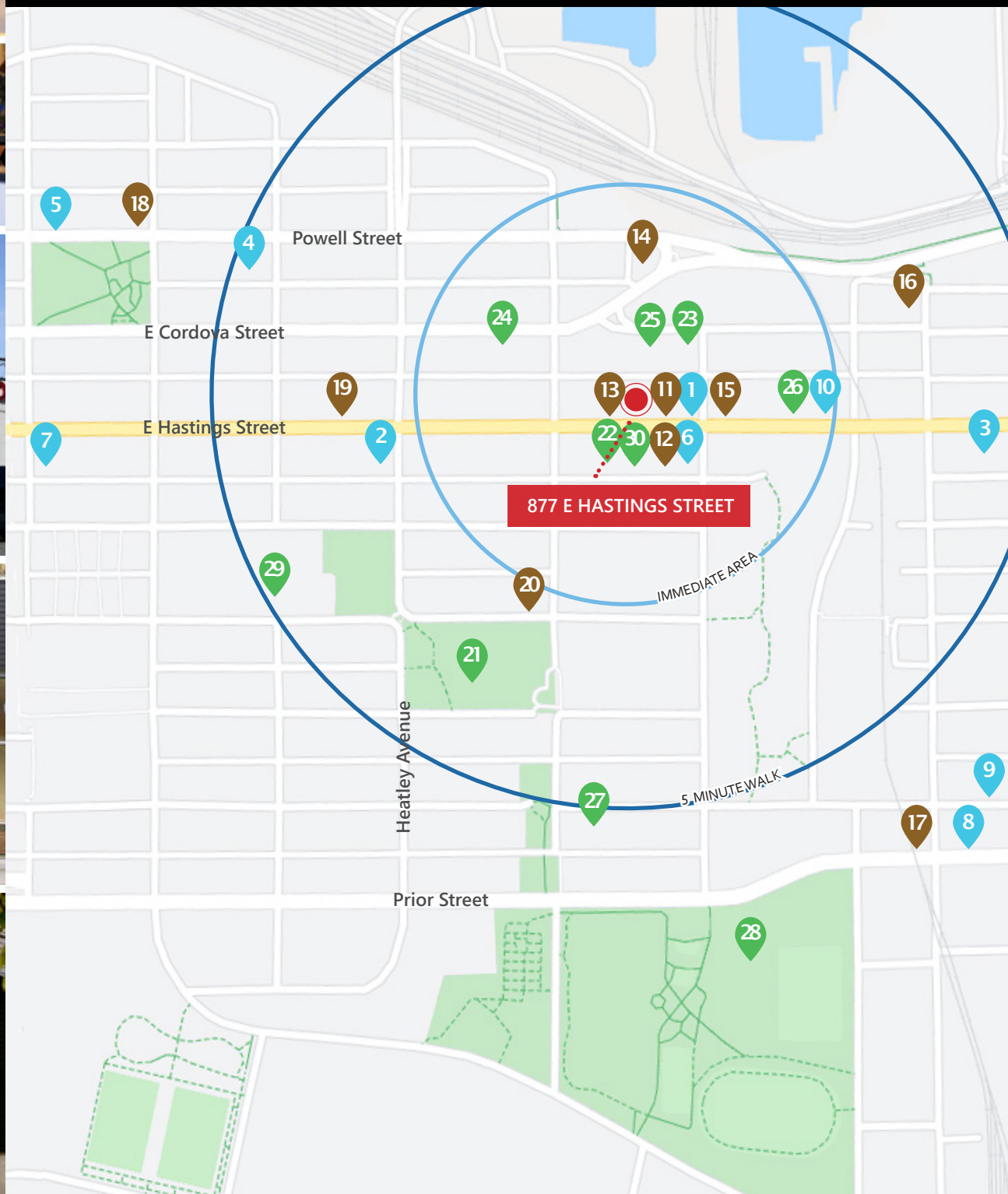
Daily errands do not require a car

74

Rider's Paradise

World-class public transportation

Source: walkscore.com



DINING + COCKTAILS

1. Strathcona Beer Company
2. The Heatley
3. Pink Pearl Chinese Seafood Restaurant
4. Dosanko
5. The Mackenzie Room
6. S2 Cafe House
7. Hanoi Pho
8. Luppulo Brewing Co.
9. Savoury Chef Foods
10. VV Tapas Lounge

COFFEE + CASUAL FARE

11. Prototype Coffee
12. The Garden Strathcona
13. Hype Chocolate Co
14. Starbucks
15. Liquids + Solids
16. Casa Del Caffe
17. La Casa Gelato
18. The Uncommon Cafe
19. Coastal Eden Cafe
20. Wilder Snail

AMENITIES + SHOPPING

21. MacLean Park
22. Article
23. Lordco Auto Parts
24. MakerLabst
25. Clubcard Printing
26. Moonlight Natural Pet Store
27. Union Market
28. Strathcona Park
29. Strathcona Community Centre
30. Wilet

Contact Us

ROBERT THAM
604.609.0882 Ext. 223
robert@corbelcommercial.com

MARC SAUL PREC
604.609.0882 Ext. 222
marc@corbelcommercial.com

DENVER MENDOZA
604.609.0882 Ext. 221
denver@corbelcommercial.com

NATHAN ARMOUR PREC
604.609.0882 Ext. 226
nathan@corbelcommercial.com

INFO@CORBELCOMMERCIAL.COM | WWW.CORBELCOMMERCIAL.COM | 632 CITADEL PARADE, VANCOUVER BC, V6B 1X3

E. & O. E.: All information contained herein is from sources we deem reliable, and we have no reason to doubt its accuracy; however, no guarantee or responsibility is assumed thereof, and it shall not form any part of future contracts. Properties are submitted subject to errors and omissions and all information should be carefully verified. All measurements quoted herein are approximate.