

FOR LEASE 260 E GEORGIA STREET

PRIME CHINATOWN RETAIL OPPORTUNITY



Yaletown

Downtown Vancouver

Gastown

Railtown



New St. Paul's Hospital Development



ROBERT THAM
604.609.0882 Ext. 223
robert@corbelcommercial.com

MARC SAUL PREC
604.609.0882 Ext. 222
marc@corbelcommercial.com

THE FEATURES



Prime retail unit with prominent frontage onto East Georgia Street



Newly renovated premise, with track lighting, new flooring throughout, along with ample natural light



Exceptional signage opportunity



Spacious unit with expansive ceiling heights throughout



Separate lower level premise with large roll-up garage door and vehicular access off lane (may be leased separately)



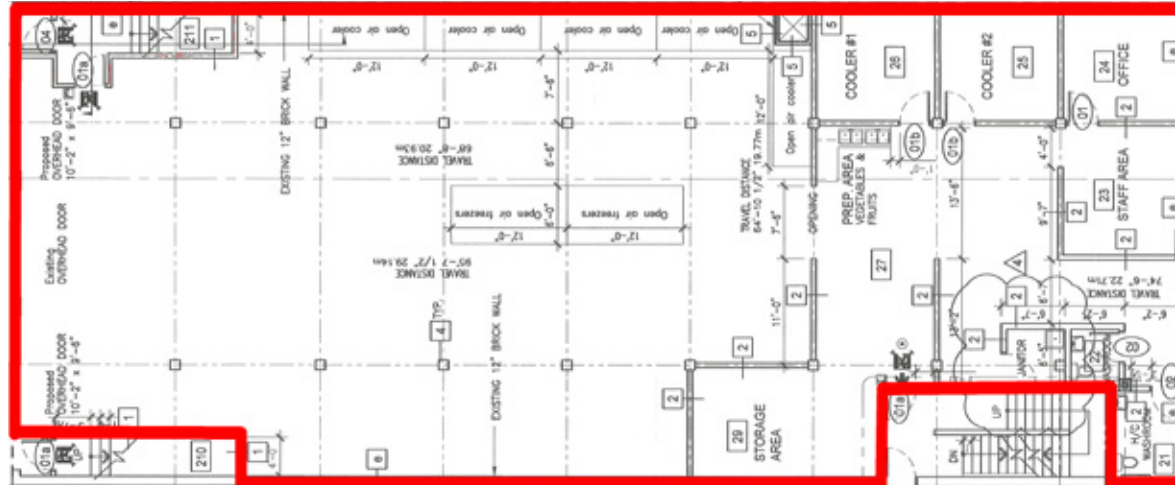
Strategic location just steps from the future St. Pauls Health Campus, and numerous residential developments



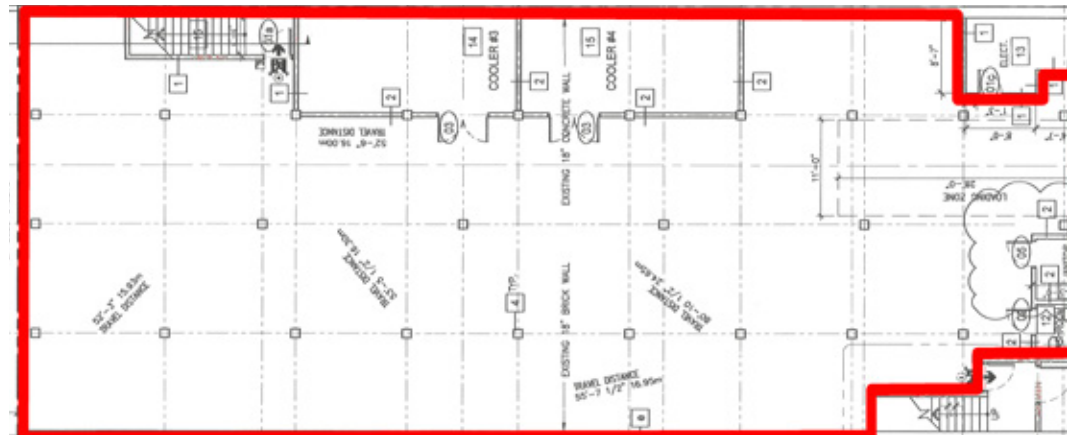
One of the most desirable streets in Chinatown, with neighboring businesses including BLND TGER, Phnom Penh, Ramen Butcher, Fiorino, Dalina, and much more



FLOOR PLAN & SALIENT FACTS



Main Floor



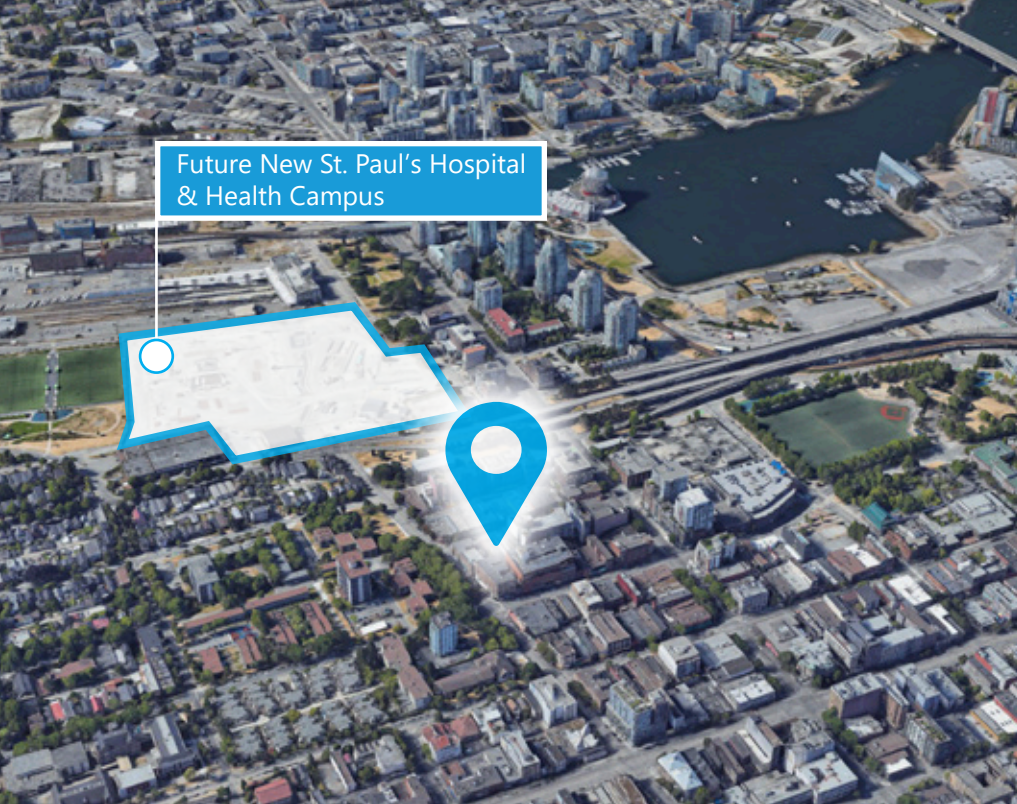
Lower Level

SIZE (Approx.): ¹	BASIC RENT:	ADDITIONAL RENT:	AVAILABILITY
Main Level: 5,520 SF Lower Level: ² 5,450 SF	Please contact agent	\$6.43 (2024 est.)	Please contact agent
Total: 10,970 SF			

¹All sizes are approximate and subject to verification.

²Lower level can be leased separately.

*Floor plan may not be 100% accurate and is subject to verification.



THE LOCATION

Chinatown is one of Vancouver's most exciting, emerging neighbourhoods, rich in history and filled with new and trendy places to live, work, and shop. The Chinatown district is home to a wide variety of boutique retailers, award-winning restaurants, and popular coffee shops. Located on East Georgia Street, in between Main Street and Gore Avenue, the subject property is near renowned restaurants that include BLND TGER, Dalina, Hunnybee Bruncheonette, The Ramen Butcher, Phnom Penh Restaurant and many others. Additionally, the property is strategically situated 2 blocks south of the new \$1.9 billion St. Paul's Hospital, a \$2 Billion purpose-built health campus, set to trigger a strong influx of employment and development in the immediate area.



2021 rendering showing the final design of the new St. Paul's Hospital. (Providence Health Care)



ST. PAUL'S HOSPITAL & HEALTH CAMPUS

Strategically situated 2 blocks north of the new \$2 Billion St. Paul's Hospital - an 18.4 acre, \$2 billion purpose-built health campus currently under development



EXCELLENT EXPOSURE

Exceptional vehicle and pedestrian exposure with abundant street and lot parking in the immediate area



CENTRAL LOCATION

Centrally located, within steps of several completed and slated mixed-use developments



97

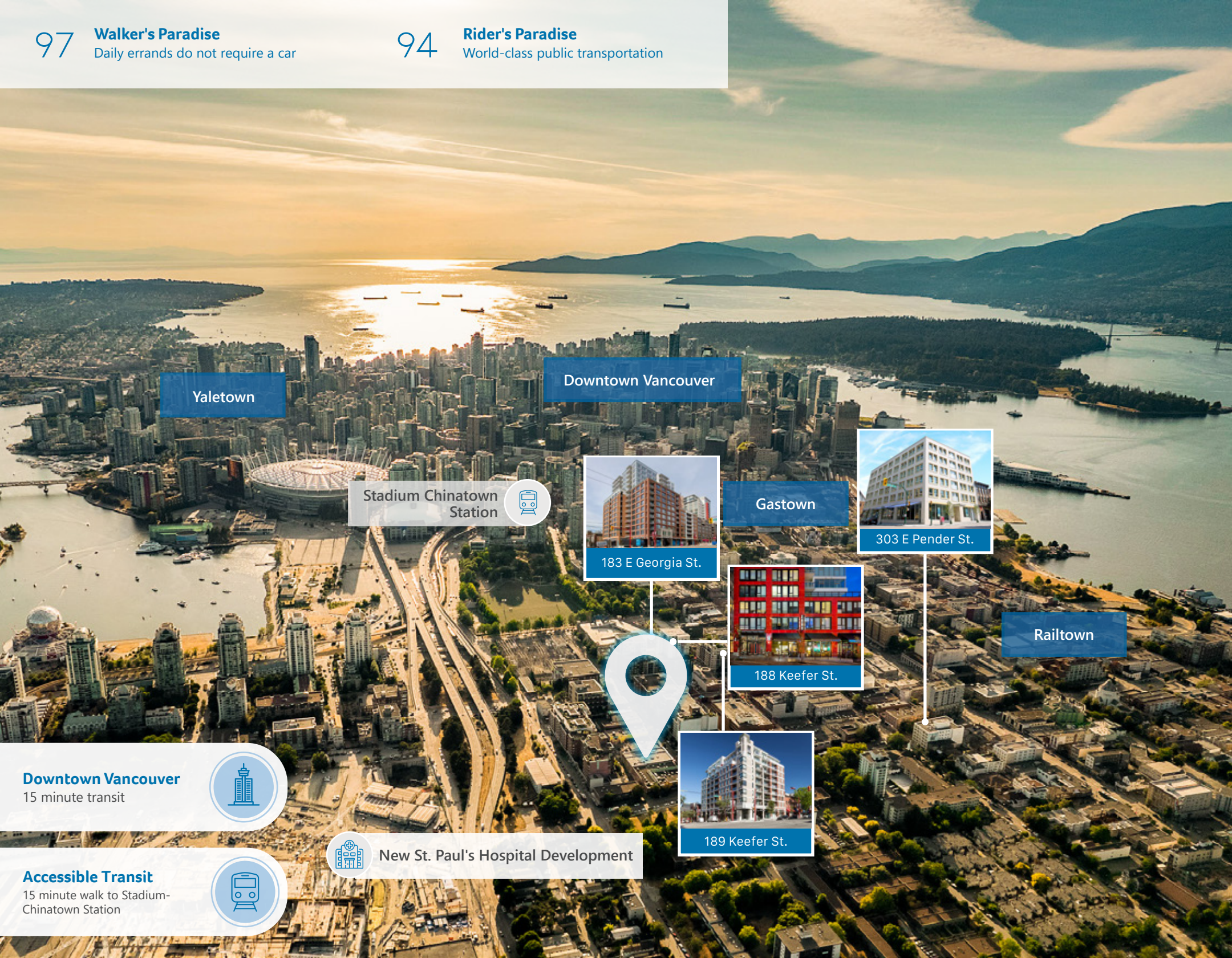
Walker's Paradise

Daily errands do not require a car

94

Rider's Paradise

World-class public transportation



Yaletown

Downtown Vancouver

Stadium Chinatown Station 



183 E Georgia St.

Gastown



303 E Pender St.



188 Keefer St.

Railtown



189 Keefer St.

Downtown Vancouver

15 minute transit

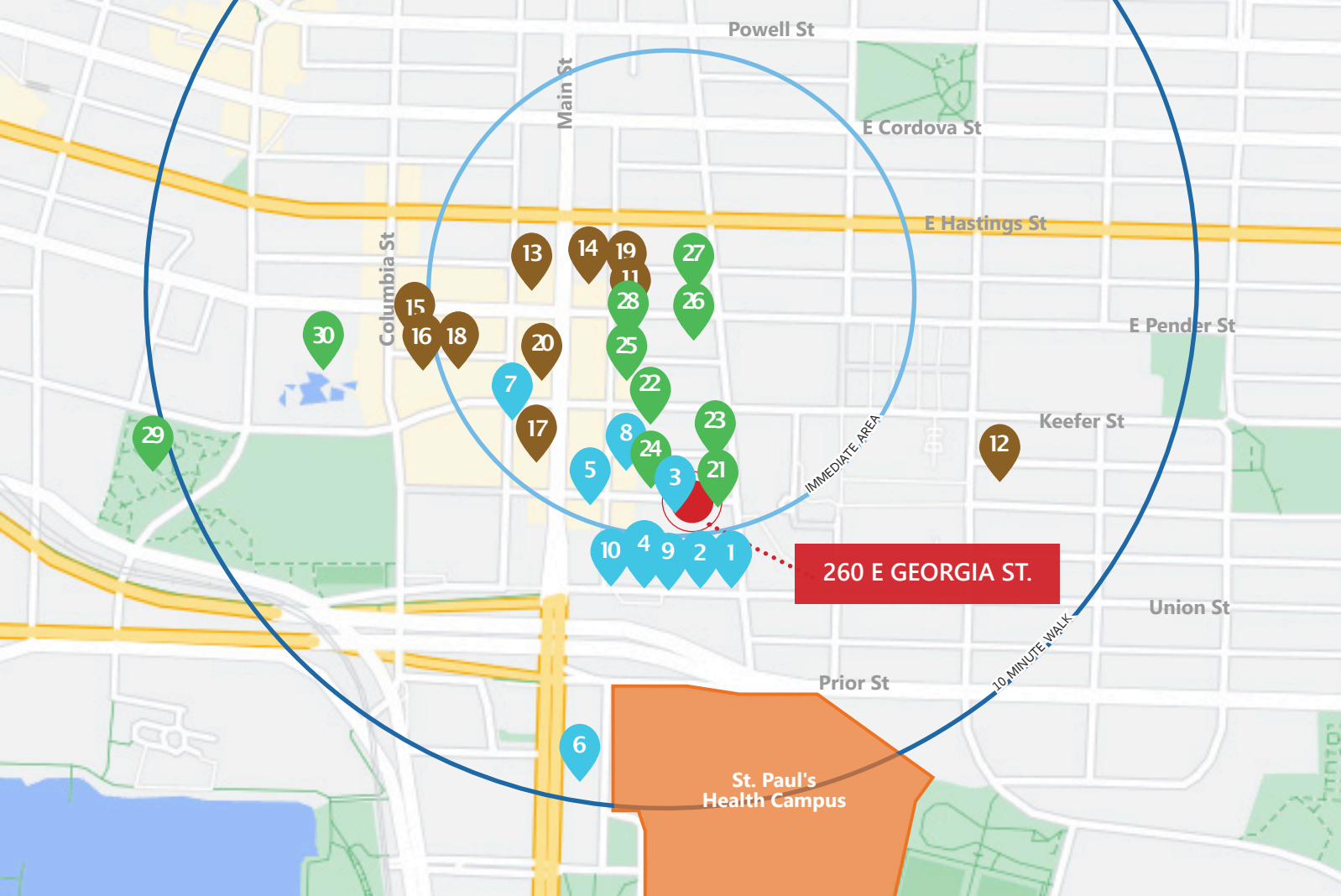


Accessible Transit

15 minute walk to Stadium-Chinatown Station



New St. Paul's Hospital Development



DINING + COCKTAILS

1. Hunnybee Brunchonette
2. Harvest
3. Phnom Penh
4. Hunter & Hare
5. Fiorino
6. Torafuku
7. Juke Fried Chicken
8. Fat Mao Noodles
9. Bar Gobo
10. Miso Taco

COFFEE + CASUAL FARE

11. The Ramen Butcher
12. Finch's Market
13. Pizza Coming Soon
14. Propaganda Coffee
15. Between 2 Buns
16. Chinatown BBQ
17. DALINA
18. New Town Bakery & Restaurant
19. Mello
20. Virtuous Pie

SHOPPING & SERVICES

21. Gore Street Vintage
22. Eastside Boxing Club
23. Myodetox
24. Treasure Green Tea Company
25. Naturally Urban
26. Diaz Combat Sports
27. Team Hybridtraining
28. Vegan Supply Chinatown
29. Andy Livingstone
30. Dr. Sun Yat-Sen Classical Chinese Garden

ROBERT THAM
604.609.0882 Ext. 223
robert@corbelcommercial.com

MARC SAUL PREC
604.609.0882 Ext. 222
marc@corbelcommercial.com



INFO@CORBELCOMMERCIAL.COM | WWW.CORBELCOMMERCIAL.COM | 632 CITADEL PARADE, VANCOUVER BC, V6B 1X3

E. & O. E.: All information contained herein is from sources we deem reliable, and we have no reason to doubt its accuracy; however, no guarantee or responsibility is assumed thereof, and it shall not form any part of future contracts. Properties are submitted subject to errors and omissions and all information should be carefully verified. All measurements quoted herein are approximate.