

FOR LEASE 1026 DAVIE STREET

RARE SMALL FORMAT WEST END OFFICE OPPORTUNITY



ROBERT THAM
604.609.0882 Ext. 223
robert@corbelcommercial.com

MARC SAUL PREC
604.609.0882 Ext. 222
marc@corbelcommercial.com

\$1,150 PER MONTH GROSS!



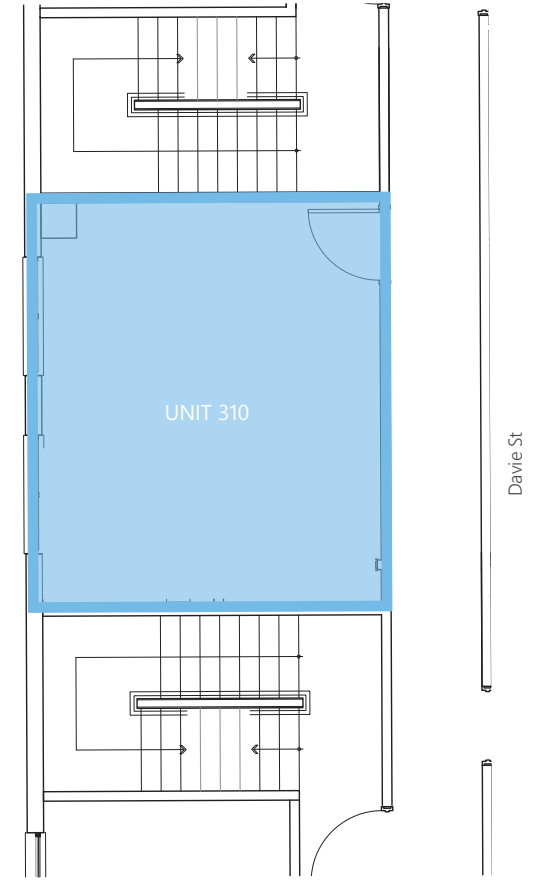
1026

DAVIE STREET






LOCATION

1026 Davie Street is conveniently located between Burrard and Thurlow Streets on the edge of the vibrant West End district, steps to the Seawall and Sunset Beach Park. The West End is a lively community featuring an exceptional mix of housing, retail shops, restaurants and cafes, plus access to incomparable recreation and amenities. The location is well-served by public transportation, with numerous bus routes and the nearby Yaletown-Roundhouse SkyTrain yielding a transit score of 99. 1026 Davie Street is a perfect location for a variety of businesses and services to call home.

FLOOR PLAN*



FEATURES

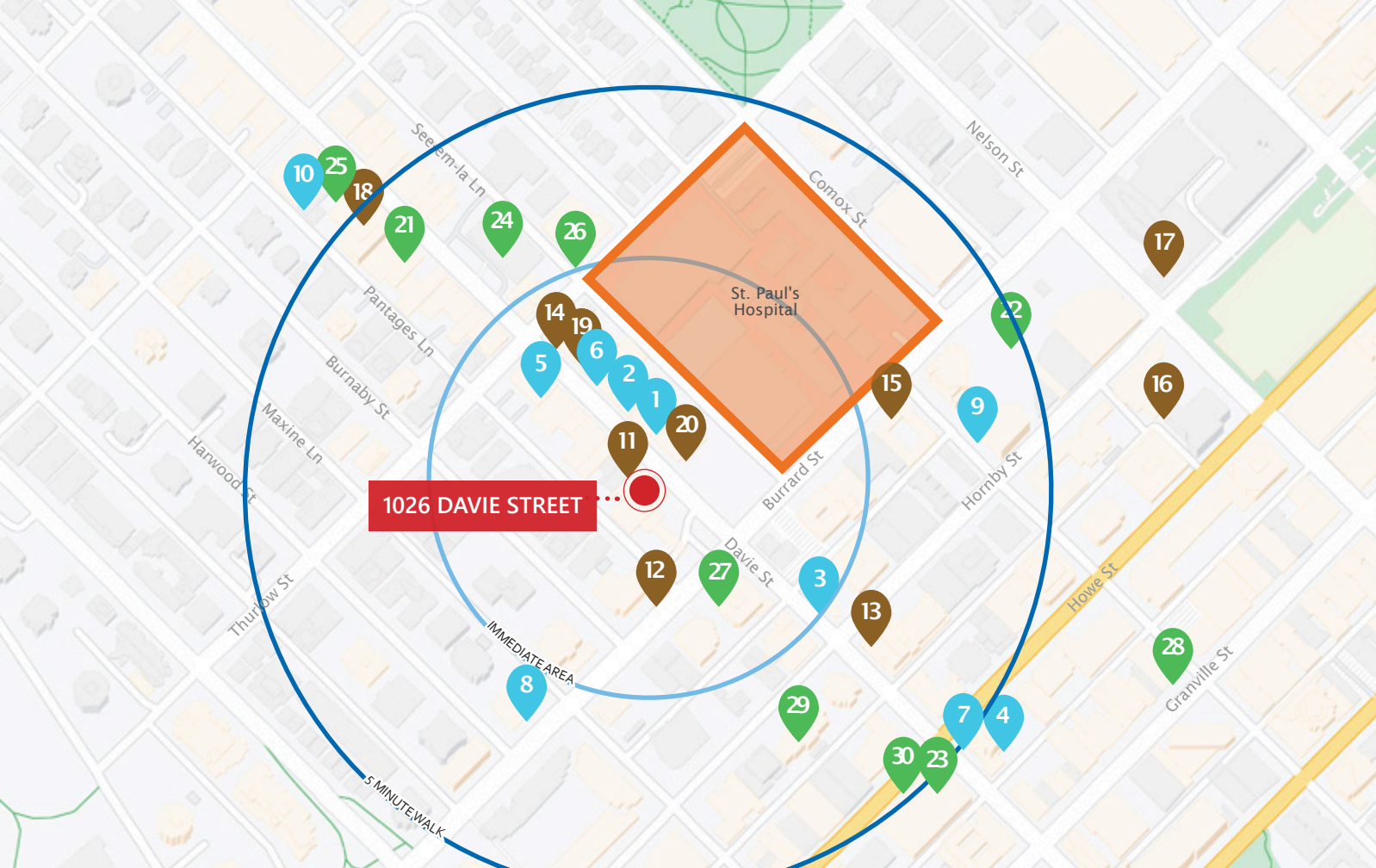
-  Charming office unit in a well-maintained building located in the bustling West End of downtown Vancouver
-  Excellent ceiling height
-  Large operable windows allowing ample natural light
-  Ample street parking in the immediate area
-  Excellent transit access and many popular restaurants and amenities in the immediate vicinity

*Floor plan may not be 100% accurate and is subject to verification.

SALIENT FACTS

- UNIT:** 310
- SIZE:¹** 300 SF (Approx.)
- GROSS RENT:** \$1,150/month + GST
- ZONING:** C-5 (Commercial District)
- AVAILABILITY:** Immediately

¹All sizes are approximate and subject to verification.



GETTING AROUND

WALKER'S PARADISE



Daily errands do not require a car

RIDER'S PARADISE



World-class public transportation



RESTAURANTS & BARS

1. Banana Leaf
2. Bonta Italian Ristorante
3. Sushi Mugen
4. Rorimomo Restaurant
5. Gringo
6. Fatburger
7. Honeybrew Strudel Bar
8. Maxine's Cafe & Bar
9. Fat Mao Noodles
10. Sushi Bar Maumi

BARS & CAFÉS

11. Vera's Burger Shack
12. Caffe Mira
13. Breka Bakery & Café
14. Starbucks
15. Elysian Coffee
16. Honolulu Coffee
17. The Alley
18. COBS Bread Bakery
19. AMOKA Coffee and Bites
20. The Fountainhead Pub

SHOPS & AMENTITIES

21. Orangetheory Fitness
22. Sheraton Vancouver Wall Centre
23. Body Energy Club
24. Shoppers Drug Mart
25. Kin's Farm Market
26. Bones Pet Stores
27. TD Canada Trust Branch
28. 8th & Main
29. Residence Inn by Marriott
30. Fitness World

ROBERT THAM
604.609.0882 Ext. 223
robert@corbelcommercial.com

MARC SAUL*
604.609.0882 Ext. 222
marc@corbelcommercial.com

*Personal Real Estate Corporation.

INFO@CORBELCOMMERCIAL.COM | WWW.CORBELCOMMERCIAL.COM | 632 CITADEL PARADE, VANCOUVER BC, V6B 1X3

corbel
COMMERCIAL REAL ESTATE SERVICES

E. & O. E.: All information contained herein is from sources we deem reliable, and we have no reason to doubt its accuracy; however, no guarantee or responsibility is assumed thereof, and it shall not form any part of future contracts. Properties are submitted subject to errors and omissions and all information should be carefully verified. All measurements quoted herein are approximate.